

THE
KAPPA
ALPHA

THETA

MAGAZINE

AUTUMN 2004



Grand Convention 2004
• Indian Wells, Calif. •

Have You Ever....

Have you ever been in a parade? I don't mean been a spectator at a parade, I mean actually participated in a parade. If you've attended a Kappa Alpha Theta Grand Convention, you have.

During the Parade of Flags—which precedes the final Convention banquet—each Theta in attendance assembles with the other members of her initiating chapter. The current chapter president carries the chapter flag, and a distinguished alumna carries the chapter standard. When the Processional music begins, the president of Alpha Chapter steps off, leading the other Alpha members through a double row of Thetas composed of members of Beta Chapter, then Gamma, then Delta, etc. As Alpha passes them, the members of Beta Chapter fall in behind, then Gamma does the same, and so on through all the college chapters. If you're a Theta, the Parade of Flags is pretty awe-inspiring; if you're not a Theta, I imagine it's still quite a spectacle.

Have you ever helped to frame legislation that will become law? I don't mean going into a voting booth and pushing a button in favor of a referendum. I mean debating, amending, and voting on proposals that will govern a 130,000-member organization for the next two years. If you've been a delegate to Grand Convention, you have.

As set forth in Article V, Section 1, of Theta's Constitution, one of the most important purposes of Grand Convention is for voting delegates to serve as the general legislative body of the Fraternity. On the Convention floor, delegates have the opportunity

to express their opinions and to hear the views of others on the proposed legislation. The periods of debate and discussion between those with various viewpoints and experiences is designed to help the delegates decide what is the best policy for the entire Fraternity.

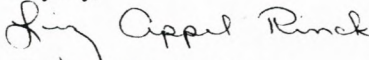
Have you ever met a member of Grand Council? Have you ever sung *The Chain Song* with more than 600 Theta sisters? If you've been to Grand Convention, you probably have.

Theta's 2004 Grand Convention was held this June in Indian Wells, Calif. Important legislation was enacted, a new Council for the 2004-06 biennium was elected, and the participants had a good, productive time. Coverage of our 66th Convention begins on page 12.

Also in this issue, you can learn about the ten recent college graduates who will serve the Fraternity as educational leadership consultants this year. You can celebrate with the Kappa Alpha Theta Foundation as it announces the 2004 scholarship award winners (215 winners, receiving more than \$520,000 in scholarships). And you can get to know Anita Trepanier, Zeta Sigma/Ohio Northern, a US Army captain currently deployed in Iraq.

As always, we hope you enjoy reading this issue of *The Kappa Alpha Theta Magazine*.

Loyally,



Liz Appel Rinck, Editor
Γ/Butler

What is it that makes Kappa Alpha Theta different from the other organizations we joined in college?

Regardless of where life takes us, the bond we share with other Thetas, the link between each of us and the Fraternity, is strong. We are always Thetas, whereas we are students for only a few years.

One way to provide for a strong Fraternity, both today and tomorrow, is for each alumna to pay \$15 per-capita dues to Kappa Alpha Theta.

If you are a dues-paying member of an alumnae chapter, you are paying your per capita fee through that alumnae chapter. If you do not belong to an alumnae chapter, you are asked to pay your per capita dues directly to the Fraternity. You may do this by mailing a check for \$15 to Kappa Alpha Theta (8740 Founders Rd., Indianapolis, IN 46268, attn: Accounts Receivable) or by making a credit card payment online at www.kappaalphatheta.org.

Executive Director Elizabeth Sierk Corridan

Director of Communications/
Editor Elizabeth Appel Rinck

Art Director Maureen Fahey Bowers

Associate Editor Stephanie Hildegad Mansell

Editorial Assistant Celena R. Baker

Grand Council

Fraternity President Karen Albrecht Ledbetter

Fraternity Vice-President College Kathleen Markey

Fraternity Vice-President Alumnae Deborah Bornmann Allen

Fraternity Vice-President Extension Carole Frankovich Brophy

Fraternity Vice-President Education Katie Busby Morrow

Fraternity Vice-President Finance
and Facilities Lyn Stewart Simensen

Fraternity Vice-President
Membership Amy Hayner Kates

Foundation President Anne Sadler Budill

Fraternity Headquarters 8740 Founders Road
Indianapolis, IN 46268-1300

Phone 317.876.1870
1.800.526.1870

FAX 317.876.1925

E-mail info@kappaalphatheta.org

Web Site www.kappaalphatheta.org

The Kappa Alpha Theta Magazine (ISSN 0746-3529) is published quarterly by Kappa Alpha Theta Fraternity for Women, 8740 Founders Road, Indianapolis, IN 46268. Postmaster: send address changes to *The Kappa Alpha Theta Magazine*, 8740 Founders Road, Indianapolis, IN 46268. Periodical-class postage paid at Indianapolis, IN, and additional mailing offices. Yearly subscription \$1. Printed in the United States.

Send copy and correspondence to:

Elizabeth Rinck, Editor
KAO Fraternity Headquarters,
8740 Founders Road, Indianapolis, IN 46268-1300
317-876-8593, 1-888-526-1870, ext. 150
E-mail: lrinck@kappaalphatheta.org

Send notices of deaths to:

KAO Fraternity Headquarters,
Attn.: Membership Coordinator
8740 Founders Road, Indianapolis, IN 46268-1300
317-876-8593, 1-888-526-1870, ext. 107
E-mail: gbrown@kappaalphatheta.org

Send notices of address changes to:

KAO Fraternity Headquarters,
Attn.: Data Entry
8740 Founders Road, Indianapolis, IN 46268-1300
317-876-8593, 1-888-526-1870, ext. 107
E-mail: info@kappaalphatheta.org

Connections Deadlines: Autumn July 11
Winter October 23
Spring January 31
Summer April 11

Kappa Alpha Theta Fraternity, founded at Indiana Asbury College (DePauw University), Greencastle, Indiana, on January 27, 1870, is the first Greek-letter fraternity known among women.

"Kappa Alpha Theta," its coat of arms, and its badges are registered trademarks of Kappa Alpha Theta Fraternity.

© 2004 Kappa Alpha Theta Fraternity



CONTENTS

AUTUMN 2004 • VOLUME 119 • NUMBER 1

REGULAR FEATURES

OVER THE DESKTOP • 2	SITE TO SEE • 11
FOUNDATION • 4	CONNECTIONS • 37
LETTERS • 5	HONORARY & MEMORIAL GIFTS • 38
SNAPSHOTS • 6	IN MEMORIAM • 39
THETA TIMES • 10	

SPECIAL FEATURES

UNDER THE GOLDEN SUN • 12
At Grand Convention 2004, Theta's twin stars shone as brightly as the California sun.

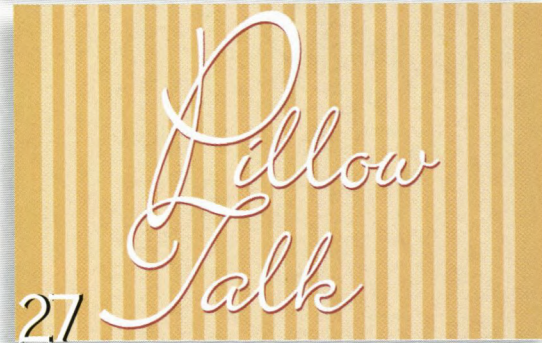
SCHOLARSHIP PROGRAM 2004 • 18
The Foundation awards more than \$520,000 to 215 outstanding Thetas.

THE FRATERNITY'S FREQUENT FLIERS • 21
Meet the Fraternity's 2004-05 educational leadership consultants.

PART OF A TEAM, MAKING A DIFFERENCE • 24
Anita Trepanier, ZΣ/Ohio Northern, embraces the challenges of a military career.

PILLOW TALK WITH KAΘ • 27
Theta's newest education program is designed to raise awareness about a serious—and common—women's health issue.

COLLEGE CHAPTER REPORTS • 28
College chapter editors report on the year's highlights.



We regret the following errors.

- On page 10 of the summer issue, Martha Hodge Noreault and Nan Reese Rinker were incorrectly identified as members of the Gamma Delta Chapter at Georgia. Both are members of the Gamma deutron Chapter at Ohio Wesleyan.
- Willee Eskew Lewis, Gamma Upsilon/Miami, was incorrectly identified as a member of the Gamma Psi Chapter at TCU.
- On page 29 of the summer issue, Nina Irwin, Epsilon Omega/Washington & Jefferson, was omitted from the list of Thetas serving as president of their campus Panhellenics.

KAPPA ALPHA THETA MISSION STATEMENT

YESTERDAY, TODAY, AND TOMORROW,
KAPPA ALPHA THETA EXISTS TO NURTURE
EACH MEMBER THROUGHOUT HER COLLEGE
AND ALUMNAE EXPERIENCE AND TO OFFER
LIFELONG OPPORTUNITY FOR SOCIAL,
INTELLECTUAL, AND MORAL GROWTH
AS SHE MEETS THE HIGHER AND BROADER
DEMANDS OF MATURE LIFE.

ON THE COVER

Participants and delegates gathered in the atrium of the Renaissance Esmeralda resort to commemorate Grand Convention 2004.

The Kappa Alpha Theta Foundation strengthens and empowers members through philanthropy and education.



Local Theta alumnae were guests at a special reception during Grand Convention 2004.

Trustees Host Local Thetas

During Grand Convention 2004, the Foundation Board of Trustees had the pleasure of hosting nearly thirty Theta

alumnae for a wine and cheese reception. The event served as a platform to connect with Thetas from Indian Wells and the surrounding communities. In addition, the trustees and Foundation staff in attendance were able to educate the women about the many programs and scholarships provided by Kappa Alpha Theta Foundation. In an effort to get "up-close and personal" with

Foundation donors, as well as Thetas around the country, Foundation trustees have hosted several different events this past year and hope to continue the outreach.

Silent Auction is a Big Hit

Kappa Alpha Theta Foundation hosted its third Silent Auction during Gand Convention 2004 in Indian Wells, Calif. Delegates and guests had the opportunity to bid on more than 180 items that were generously donated by college and alumnae chapters, as well as individual members. The auction was open for bidders throughout the entire Convention, and it was clear to all that Thetas love to shop! Nearly \$15,000 was raised, and all proceeds will benefit the scholarship program of Kappa Alpha Theta Foundation. Thank you to all who participated in the 2004 Silent Auction!

2004-2006 Board of Trustees

Anne Sadler Budill, President
AX/Purdue

Kathleen Bennett Tonkel,
Vice-President
H/Michigan

Melanie McLendon Dowell
ΔE/Arizona State

Suzanne Sterling King
ΓΦ/Texas Tech

Kim Harvey Looney
ΔΠ/Tennessee

Lisa Edelmann McLaughlin
BP/Duke

Jill Pedicord Peterson
BT/Colorado State

Karen Albrecht Ledbetter,
Fraternity President
ΓΤ/Tulsa

Deborah Bornmann Allen,
Fraternity Vice-President Alumnae
ΔΘ/Florida

KAPPA ALPHA THETA FOUNDATION

8740 FOUNDERS ROAD
INDIANAPOLIS, IN 46268-1300

phone 317.876.1870
800.KAO.1870

fax 317.876.1925

web www.kappaalphatheta.org/foundation

Foundation Honors Mary Jane Parker Beach

Since 2003, the Foundation has been working with Theta volunteers to raise money to establish the Mary Jane Parker Beach Scholarship, in honor of past Fraternity President Mary Jane Parker Beach, Beta Nu/Florida State. During the Kappa Alpha Theta Foundation luncheon held during Grand Convention 2004, Foundation President Anne Budill, Alpha Chi/Purdue, had the pleasure of announcing the establishment of the scholarship. "The Fraternity and Foundation are both honored to have had Mary Jane share her knowledge and compassion," Budill said. "She has served both boards with total commitment, and we have reached 'the next level' thanks to her vision."

At the luncheon, Beach had the opportunity to personally meet the first recipient of her scholarship, Sarah Sciarani, Beta Mu/Nevada. Beach later said, "What a wonderful surprise when Anne announced that a scholarship had been established in my honor. Even more meaningful was to meet the first recipient, Sarah Sciarani, there at the luncheon. I can't think of anyone more deserving. I was deeply touched to see how many Thetas and friends made this scholarship a reality. I can think of no greater tribute to remind me of the four



Sarah Sciarani, BM/Nevada, and Former Fraternity President Mary Jane Parker Beach, BN/Florida

years during which I had the opportunity to serve as Kappa Alpha Theta's Fraternity President."

Sciarani also expressed her gratitude. "I am honored to be the first recipient of the Mary Jane Parker Beach Scholarship. She is truly an amazing person and is an inspiration to all members of Kappa Alpha Theta. Mary Jane has contributed so much and has made a lasting impression on the Fraternity. I admire her for all of her hard work and great personality. I would also like to thank Kappa Alpha Theta Foundation for awarding me this scholarship and for all that they do for the Fraternity."

A DISTINGUISHED THETA

Sometimes our lives cross with those of other Kappa Alpha Thetas when we least expect it. My brief acquaintance with Mildred A. Talbot, a dear friend of my sister, came during a visit to New York City. What a fascinating woman Mrs. Talbot was! She influenced many through her work to educate Americans about Asia and her world travels with her husband of 60 years, former Ambassador Phillips Talbot.

A 1936 graduate of the University of Illinois, Mrs. Talbot first visited Asia in 1942. She served as a club director for the American Red Cross in Karachi, New Delhi, and Calcutta. In 1943, Mrs. Talbot was hired in the field by the OSS, predecessor to the CIA, as assistant to its chief for the China-Burma-India theatre, stationed in New Delhi. In 1944, she moved to Kunming, China, to serve as assistant to the US Army commanding general for supplies, while her husband was posted as assistant naval attaché in the Nationalist capital Chungkung.

The Talbots returned to the US after World War II and, in 1946, the *Chicago Daily News* sent Mr. Talbot to India to cover the departure of the British after 250 years of colonial rule and the partitioning of India into two countries in 1947. Only 40 foreign correspondents and their wives attended the transfer of power ceremonies and witnessed the handover of power by Britain's Viceroy Lord Louis Mountbatten to the leader of the newly created nation of Pakistan, Mohammad Ali Jinnah. The group then flew to New Delhi and, at midnight of the same day, covered the ceremonies transferring power to the new independent Indian government headed by Jawaharlal Nehru.

Through the 1950s and 1960s, Mrs. Talbot assisted her husband as he directed the American Universities Field Staff in India and later when he served in the Kennedy administration as assistant secretary for Near Eastern and South Asian affairs. In the late 1960s, Mrs. Talbot and her husband lived in Athens, where he was ambassador to Greece. During the 1967 coup by Greek military colonels, she maintained a pragmatic, Midwestern calm in the besieged American embassy.

When Mr. Talbot resigned from

government service, the Talbots moved to New York, where Mr. Talbot served as president of the Asia Society from 1970 until 1981. Mrs. Talbot remained active in feminist and public affairs, serving as president of the National Council of Women of the United States and Elder Craftsmen, Inc. and as UN representative for the Asia Society, Associated Country Women of the World, and Population Communications International. She was on the boards of the Reading Reform Foundation, Pan Pacific and Southeast Asia Women's Association, the Overseas Education Fund of the League of Women Voters, Off the Record Luncheons of the Foreign Policy Association, and Princeton in Asia. She was founding chair of the N.Y. Metropolitan chapter of the United Nations Fund for Women. She was an elder at Madison Avenue Presbyterian Church and on the Visiting Committee of Harvard Divinity School.

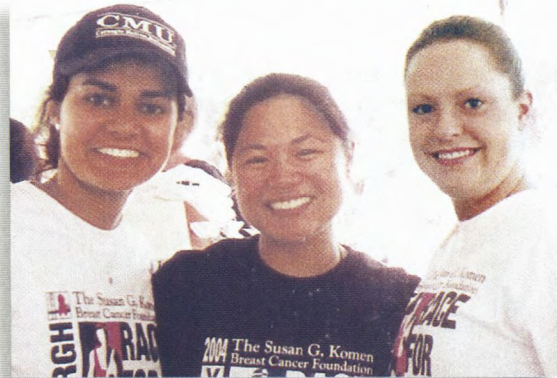
Mrs. Talbot was an amazing and interesting Theta woman and a true American leader. I'm pleased I was able to meet her. Mrs. Talbot died June 20 at the age of 89. While many will miss her wonderful stories of world history in the making, her influence on Americans and people throughout the world will continue to live on.

VICTORIA A. EMMONS
BN/FLORIDA STATE

THETAS EVERYWHERE!

Thetas are everywhere. When I first rushed Theta, I knew it was the house for me. I was even fortunate to have my cousin, Melanie Fuertes, Beta Eta/Pennsylvania, become a Theta, too.

Recently, I participated and volunteered at the Pittsburgh Race for the Cure. As I was making preparations at the pre-registration tent, I noticed a young lady wearing a kite charm on her necklace. Immediately, with hand extended, I said, "You're a Theta!" She is Angelika Deogirkar, Gamma Theta/Carnegie-Mellon. Angelika also introduced me to another sister, Melissa Borek, Beta Eta/Pennsylvania.



Thetas Lori Robles, AΩ/Pittsburgh (center), Angelika Deogirkar, ΓΘ/Carnegie-Mellon, and Melissa Borek, BH/Pennsylvania, participated in the 2004 Pittsburgh Race for the Cure.

Another recent chance meeting of Theta was online. I am proud of my badge, and I believe in trying to return lost badges to the Fraternity, the rightful owner, or the college chapter. On e-Bay, I bid on a badge from my chapter (Alpha Omega/Pittsburgh). Before the auction ended, I received a message from another Theta stating she wouldn't bid against me for this badge. Unbeknownst to me at the time, this special Theta was Fraternity Vice-President Alumnae Debbie Allen, Delta Theta/Florida. When I was at school, we only "heard of" Grand Council. It is a privilege to know a Council member now!

I was disappointed to receive news from e-Bay that I was outbid on the badge. I contacted the winning bidder and was upset that the winner was a man, Jeff Lewis. I thought he was one of those e-Bay-ers who buys and then resells badges at higher prices. But he had actually purchased the badge for his fiancée, Kirsten Yukish, Eta Omega/Washington and Jefferson.

Jeff and Kristen kindly conceded and allowed me to purchase the badge. Thank you, Kristen, for letting me bring the badge of Mary McElheny, who pledged in 1924, "home" to the Alpha Omega Chapter.

Thetas really are everywhere. Whether you are online, traveling, shopping, or doing philanthropic work, watch for those kites and introduce yourself.

LOURDES MARIE ROBLES
AΩ/PITTSBURGH

SNAPSHOTS



ZY/SOUTHERN MISSISSIPPI alumnae **MADDY CAMPBELL** and **BELMONT BILLHOFFER** stop for a picture while visiting friends and family in Colorado.



EPSILON ETA/CENTRE COLLEGE executive officers **ABIGAIL SPALDING**, **LUCY LEE WACHS**, **HILLARY MONROE**, **MORGAN SMITH**, **SARAH MITCHELL**, **WHITNEY FAUST**, and **LINDSAY RALL** took a break at the District Leadership Conference.

TRAVEL

AMANDA KOZLOWSKI, O/USC, and **LIZ BROWN**, AX/PURDUE, spent six weeks studying abroad and posed for this photo in Madrid, Spain.



SARA DERUCKI, **JENNIFER PERDUE**, and **KATRINA SERRAT**, all $\Delta\Phi$ /CLEMSON, make the Theta kite at the Parc De La Ciutadella while enjoying spring break in Barcelona, Spain.

MELISSA MCCONNELL, $\Delta\Omega$ /TEXAS A&M, was crowned Miss Louisiana USA in October 2003. During her reign, she makes appearances around the state of Louisiana. In April 2004, she competed in the Miss USA pageant. McConnell is a member of the Louisiana Bar Association and is a practicing attorney in Baton Rouge.



JUDY BRADBURY TURNER, BZ/OKLAHOMA STATE, has been appointed the executive director of special services for Vinita, Okla., public schools. Turner is regarded nationally as a valued resource in the field of dropout prevention and regularly leads workshops and seminars across the country. She received the 2000 Crystal Star Award for the Outstanding Dropout Prevention Program, and was recently inducted into Oklahoma State University's College of Education Hall of Fame.



STEPHANIE RICE JONES, ZN/COLLEGE OF CHARLESTON, was recently awarded the College of Charleston's Distinguished Alumni Award in Communication. She was one of five alumni to receive this year's award. Jones is a public relations specialist at Chernoff Newman, a full-service advertising, marketing and public relations firm in Columbia, SC.



KRISTIN HEINEN, ZN/UC DAVIS, was named Greek Woman of the Year by the UC Davis Panhellenic. This is the second year in a row that a member of Kappa Alpha Theta has received that honor from the UC Davis Panhellenic.

ALUMNAE



JULIE HINKLE BONDER, BARBARA DILTS HAVLOVIC, BARBARA KOCH FERGUS, KATIE BORN MCCLURE, all ΑΓ/OHIO STATE; MARTY RINEHART VLEREBOME, Γ^Δ/OHIO WESLEYAN; and HANNA HOLT



ZESIGER, BB/RANDOLPH-MACON WOMEN'S COLLEGE, attended a Founders Day luncheon and program for the COLUMBUS ALUMNAE CHAPTER.

JULIA RAINS NUSKEN, ΓΥ/MIAMI, was named 2004 Theta of the Year by the Columbus Alumnae Chapter.

Nusken, a former alumnae chapter president and **ALPHA GAMMA** faculty board member, was honored for her outstanding service to Theta. 2003 Theta of the Year winner **LINDA GERBER LUCAS, AM/MISSOURI** (left) presented Nusken with the award at the Columbus Alumnae Chapter Founders Day.



Fifty-year Thetas **SHARON LANTOW ROOS, SUZANNE BOND HIPKE, CARMEN RAY-BETTINESKI, and MYRT TROSETH KNAPP, all ΑΣ/WASHINGTON**

STATE, were honored at the **SEATTLE ALUMNAE CHAPTER'S** Founders Day celebration. Bettineski received special recognition as the first executive director of national CASA.



The **ZETA SIGMA/OHIO NORTHERN** Chapter recently celebrated its ten-year anniversary. Speaking at the ceremony were **JANE WAINSCOTT BUROKER, ΖΣ/OHIO NORTHERN**, first chapter president; **MELISSA MARSHALL VANCE, ΖΣ/OHIO NORTHERN**, faculty corporation board president, **JENNIFER SUSPANCIC CISELL, ΓΘ/CARNEGIE MELLON**, advisory board chairman; and **LAURIE MCGREGOR CONNOR, Γ^Δ/OHIO WESLEYAN**, alumnae district officer and part of the 1994 presentation team.



AI/WASHINGTON-ST. LOUIS alumnae members celebrated Founders Day in St. Louis.



SUE LABARRE SURGES, CYNTHIA SCOTT FOSTER, BARB BEEMER MORITZ, and GEORGIA HAFNER WINDHORST, all ΓΠ/IOWA STATE, celebrated Founders Day in the San

Francisco Bay Area when Moritz visited from Australia.

Members of the **KALAMAZOO, MICH., ALUMNAE CHAPTER** celebrated at a Founders Day luncheon. Seated are **KAY BILDERBACK BURTIS,**

ΓΥ/MIAMI UNIVERSITY; ALICE RUSSELL MULLEN, K/KANSAS; PAT MULLEN, ΒΠ/MICHIGAN STATE; standing are **GAYLE BROTHERTON STEPHENSON, ΓΣ/SAN DIEGO STATE; LINDA WOODWARD BAIRD, Γ/BUTLER; DIANE THOMPSON HECKLER, ΒΗ/PENNSYLVANIA; AUDREY MEISTERLING BECK, ΓΖ/CONNECTICUT; MARGE MILLER NEUBIG, ΑΓ/OHIO STATE; GINGER CORDES SNYDER, Η/MICHIGAN; DONNA AHLUM ALEXANDER, ΑΩ/PITTSBURGH; JOYCE TESAR BATES, ΒΠ/MICHIGAN STATE; and BARB FIRESTONE JONGEWARD, Π/ALBION.**



Reunions



KAREN GLENN SMITH, KAREN MARHEINE VUURENS, SUE BURMEISTER PIZZIMENTI, SUE KELLER SMITH, MOLLY THIBAUT CLEARY, CATHY RHODES DeMASON, and KATHY SHAW SCHROETER, members of the ETA CHAPTER at MICHIGAN, enjoyed a winter reunion in Petoskey, Michigan.



Twenty members of the 1963 new member class at KAPPA/KANSAS celebrated KU's Homecoming in October. *Back:* PATTI DUNCAN CRAWFORD, MARILYN YOUNG MILLER, BARBARA BROOKS DeBAUGE, GAIL EBERHARDT JOHNSTONE, SUE HAY KAPSALIS, CAROLE SUE FRANCISCO PRESCOTT, SHARON FOSTER MARTIN, MARILYN CORY LEDDY; *Middle:* KENDALL WAGGONER HAGAN, SHELLEY MOORE PETERS, CAROLYN PARKINSON GOUGH, SUSAN ERESCH LOOSEN, MARTHA ANN TERRILL KING, MARTY GIBSON THORNING, JUDY GEISENDORF ADAMS; *Front:* MARY MISCHLER BARICKMAN, SHARON SAYLOR SCHAEFER, CONSY HUNTER MATTESON, DARLA McJILTON NEAL, ANN HOLMES BONTRAGER.



LINDA BIRD BROWN, SARAH ANDERSON BOYD, LUCIA LOCHNER PETRIE, and KATHY BENNETT TONKEL, former roommates at the ETA CHAPTER at the UNIVERSITY OF MICHIGAN, ring out three cheers for Theta while at Canyon Ranch in Tucson, Ariz.



MARTHA STUBER GRIFFITH, ALICE HAMMOND MOHR, HARRIET PARSONS SWEDLUND, TRISH FOBES RONALD, SYLVIA SCHMID MUFF, and CARYL IVES ROHWEDDER, all ΓΠ/IOWA STATE, returned to Iowa State for the Class of 1954 reunion in May. They caught up over pictures and sorority scrapbooks during a luncheon.

ADA AGRAIT, CATIE ALBA TERRY, COLLEEN MANIGAN FISHER, KIM SCHPERO, ALLISON MORGENSTERN, KRIS BORZILLERI, MICHELLE NASHMAN, CHRISSY PARADISE MASTRANGELO, RENE VOGT, SHEY CARPENTER O'GRADY, and ELLEN KROEGER, all X/SYRACUSE, met at Syracuse for an on-campus reunion.



KAREN LUND THOMAS, SUSAN GIELOW BAKKEN, CHRISTY KLOFANDA McDONALD, and JENNIFER IGGULDEN COMPTON, all Ψ/WISCONSIN, enjoyed a girls' weekend at Walt Disney World in January.



CELIE GWATKIN, ΔO/ALABAMA, LOUISE FRIEDRICH, ΓΔ/GEORGIA, and SARAH MARTINO, ΔZ/EMORY, were among 48 debutantes at the Nutcracker Charity Ball in Mobile, Ala. The event raised more than \$76,000 for the Ronald McDonald House, Friends Interested in Neurological Disorders, and the Mobile Ballet.



Members of the DELTA KAPPA CHAPTER at LOUISIANA STATE paused for a picture while watching floats pass by at a Mardi Gras Parade in Mandeville, La.



Six Thetas met while attending the Southeast Panhellenic Conference in Atlanta in March: HEIDI BERLIN, ΔΩ/TEXAS A&M, CHRISTIE BREDAHL, ΕΨ/ RICHMOND, ASHLEY DAVIS, ΔK/LOUISIANA STATE, ABBY BARNETT, ΔΩ/TEXAS A&M, ELISA NEGRIN, and MAGAN GAND, both ΔΘ/FLORIDA.

Theta for a lifetime



Seventy-eight members of the BETA NU CHAPTER at FLORIDA STATE reunited in Tallahassee in April. They enjoyed a weekend of special events, including a tour of the Florida State campus, and lunch at the Theta chapter house.

NANCY HOY MCCAHREN, AP/SOUTH DAKOTA, received the North Central Conference Honor Award for heightening the integrity of the conference and her development of athletic programs at the University of South Dakota. McCahren was the first woman to serve on the USD Athletic Board of Control, as well as to chair the board. In May 2004, she retired as the executive director of the University of South Dakota Alumni Association, after working more than 50 years at the university

AUDREY ROY, ZM/MIT, finished a project that is to become a permanent exhibit at MIT. Roy, along with two other MIT students, created iQuarium, a hands-on virtual aquarium that uses 3-D animation software to allow visitors to chase fish around a peaceful underwater environment.

SAMANTHA HUNTER, ΔZ/EMORY, was one of 12 Florida students named to Gov. Jeb Bush's inaugural Gubernatorial Fellowship Program. Hunter, a law student at the University of Florida, will be assigned to the governor's executive office and agencies, based on her area of concentration. Members of the program meet weekly to participate in a lecture series and will take part in news conferences, budget briefings and policy briefings.

Logic Made Easy: How to Know when Language Deceives You, authored by DEBORAH BENNETT, ΔO/ALABAMA, focuses on "the barriers we face in trying to communicate logically with each other." Bennett also authored *Randomness*, which has been translated into several different languages. Bennett is a professor of mathematics at New Jersey City University, is married to actor/composer Michael Hirsch and lives in Jersey City.

In 2003, LIL BREUL O'ROURKE, X/SYRACUSE, accepted an opportunity to work for Syracuse's College of Arts and Sciences as the associate dean of advancement. In her new position, she will make the college stronger by coordinating a strategic plan, including fund-raising and outreach for alumni and students. ♦

MILESTONES

The summer of 2004 marked milestone anniversaries for the following Kappa Alpha Theta officers.

5 years

- Ashley Atkins, college district president
- Tracey Thornblade Belmont, alumnae district president
- Christa Dell, membership district director
- Kathleen Markey, Fraternity vice-president college
- Joni Schneider Morrow, educational district director
- Ilana Pressman, educational district director
- Frances Black Sewell, finance district director
- Dale Jewett Sullivan, facility corporation district director

10 years

- Amy Hayner Kates, Fraternity vice-president membership
- Janice Rae Wallenborn Lawson, Fraternity historian

35 years

- Lissa Luton Bradford, NPC delegate

And finally, special congratulations and thanks to **Jane Chadwell Delony, Alpha Eta/Vanderbilt**, who this year marks her **50th anniversary** as a Kappa Alpha Theta volunteer! Delony began her years of service to the Fraternity by serving as an alumnae

district president from 1954 to 1959. She served as a state chairman from 1959 to 2002 and has been the permanent alumnae secretary for the Alpha Eta Chapter since 1972. In 2002, the Nashville Alumnae Chapter established the Jane Chadwell Delony/Nashville Alumnae Chapter Named Grant Endowment. Friends report that Delony plays golf and tennis weekly and—in her 80s—still enjoys water-skiing.

FOR A LIFETIME

Regardless of where life takes us, the bond we share with other Thetas, the link between each of us and the Fraternity, is strong. We are always Thetas, whereas we are students for only a few years. One way to provide for a strong Fraternity, both today and tomorrow, is for each alumna to pay \$15 per-capita dues.

If you are a dues-paying member of an alumnae chapter, you are paying your per capita fee through that chapter. If you do not belong to an alumnae chapter, you may pay your dues directly to the Fraternity. You may do this by mailing a check for \$15 to Kappa Alpha Theta (8740 Founders Rd., Indianapolis, IN 46268, attn: Accounts Receivable) or by making a credit card payment at www.kappaalphatheta.org.

GO VOTE

This year, Theta is participating in an exciting new program for Greek students nationwide called GO VOTE

04. GO VOTE 04 stands for **G**reeks **O**rganizing **V**oting **O**pportunities, **T**ransportation, and **E**ducation in 2004.

Membership in Kappa Alpha Theta is a privilege that carries with it a responsibility to improve our campuses and communities in a number of ways. GO VOTE 04 encourages each of us to educate ourselves about the issues, to get involved in the campaign(s) of our choice, to get to the polls, and to encourage others to vote.

REUNIONS ANNOUNCED

ΔΕ/NORTH CAROLINA

Alumnae reunion the weekend of May 20, 2005 in the Washington, DC, area. Contact Annie Crowder, '84, for details at Crowder980@comcast.net or go to Yahoo!Groups and search Delta Xi's group for recent updates and info.

PLANNING A REUNION?

If you are trying to locate Thetas from your chapter for a reunion, place a reunion notice in *The Magazine*! Send a brief notice to Reunions, The Kappa Alpha Theta Magazine, 8740 Founders Road, Indianapolis, IN 46268. Be sure to include a contact name, phone number, and e-mail address.

Notices for reunions to be held May through July must be received by January 31; for August through October, received by April 11; for November through January, received by July 11; and for February through April, by October 23.

WRITE TO US!

Do you have a comment about an article in this or any other issue of *The Magazine*? Do you know an accomplished Theta who would be a good subject for a profile article? Do you have a Theta issue on your mind?

Then let us hear from you! We are pleased to receive letters from our readers; we value your input.

Letters to *The Magazine* may be sent via mail (Liz Rinck, Kappa Alpha Theta, 8740 Founders Rd., Indianapolis, IN 46268), fax (317-876-1925), or e-mail (lrinck@kappaalphatheta.org).



HAPPY BIRTHDAY

Rose Preuss Sowder, BΘ/Idaho, celebrated her 100th birthday surrounded by her Theta daughters, granddaughters, sister, and nieces. (Kay Henry Upshaw, AΣ/Washington State; Sandra Sowder Mitchell, ΓM/Maryland; Jane Henry Trunkey, AΣ/Washington State; Marianne R. Mitchell, ΓM/Maryland; Rose Preuss Sowder; Dorothy Preuss Lee, BΘ/Idaho; Diane Sowder Thompson, BΘ/Idaho; Lynn R. Thompson, EΨ/Richmond; and Cynthia Sowder Picha, ΓM/Maryland.) Being a Theta is definitely a family tradition!

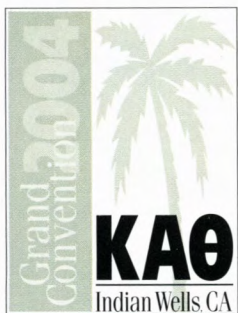
As summer winds down, it is time to reconnect with KΑΘ by visiting www.kappaalphatheta.org.



If you know a young woman who became a Theta this fall and are wondering what to get her as a welcome gift, visit the **Theta Marketplace**. You will find great Theta gifts for a new member ... or for yourself! Find Theta jewelry, clothing, photo albums, stationery, hats, and much more!



The **Theta Directory** is the place to learn about the new officers elected at Grand Convention this summer, meet the new educational leadership consultants, find an alumnae chapter in your area, and find the link to your own chapter's website.



Grand Convention

For a recap of Grand Convention 2004 in Indian Wells, Calif., just click on the **Grand Convention logo** on the home page. You can see a list of award winners, view Convention photographs, and more!



Alumnae Dues

Did you know you can pay your individual alumnae per capita dues online? To pay your alumnae dues online, click on the Alumnae Dues icon on the right-hand side of the home page, sign in to Thetas Online, and follow the instructions from there.

It is a fast, easy way to provide for a strong Fraternity, both today and tomorrow.

Update Your Info

Make sure you don't miss another magazine or mailing from Kappa Alpha Theta! You can now make name and address changes online. Go to Request Personal Information Changes, fill in the information requested, and click on the submit button. The new information is automatically sent to Fraternity headquarters for verification with the membership database.

Theta Registry

Find sisters you may have lost touch with, and make sure they can find you! In the Theta Registry section of Thetas Online, you can enter your contact information and become searchable by Thetas all over the world. You can also search for your old friends while you are there!

There is always something new at ...

www.KappaAlphaTheta.org

Grand Convention 2004

Beneath deep blue desert skies, the Renaissance Esmeralda resort provided a stunning backdrop for Grand Convention 2004. The twin stars of Kappa Alpha Theta shone as brightly as the golden California sun when more than 570 Thetas from across the continent gathered to guide the Fraternity into the next biennium.

For three days and four nights, Convention participants attended business sessions, like-officer discussions, and educational presentations. During a "free" afternoon, they also had the opportunity to explore the Palm Desert area, do a bit of shopping, or lounge by the pool.

Business Sessions

Grand Convention governs the Fraternity. In five business sessions, Convention delegates—comprising college and alumnae chapter presidents; college and alumnae district presidents; members of Grand Council, including the Foundation president; and the National Panhellenic Conference delegate—considered and voted on more than 35 amendments to the *Kappa Alpha Theta Constitution and Bylaws*.

Several pieces of legislation—prompted by privacy concerns as more universities and colleges request that fraternities and sororities make their laws publicly available—removed mention of specific aspects of our ritual from the Constitution. An amendment to the Bylaws, based on a recommendation by a committee appointed by Grand Council to study membership reinstatement, provided for reinstatement of membership under certain, limited, conditions. Other legislation more clearly defined the role of one Fraternity vice-president and several standing committees and established additional standing committees. (An electronic, searchable version of the 2004 Constitution and Bylaws is available in the Theta Manuals section of the Thetas Online area at www.kappaalphatheta.org.)

The Kappa Alpha Theta Foundation

The Foundation's second biennial Silent Auction, featuring unique items donated by alumnae and college chapters and by individual Thetas, was a popular destination for Convention-goers. The auction raised more than \$14,100 for the Foundation.

College and alumnae chapters and individuals also generously donated more than 100 backpacks, which were presented to the Riverside County Chapter of CASA.

The Foundation Luncheon featured keynote speaker John Spence, who addressed the topics of leadership and life success. Also at the luncheon, Foundation President Anne Budill, Alpha Chi/Purdue, announced the establishment of the Mary Jane Parker Beach scholarship, which honors retired Fraternity President Mary Jane Beach, Beta Nu/Florida State. The first recipient of the scholarship was Sarah Sciarani, Beta Mu/Nevada. "The Fraternity and Foundation are honored to have had Mary Jane share her knowledge and compassion," said Budill. "We have reached the 'next level' thanks to her vision."



CASA representatives posed with donated backpacks.

Panhellenic Luncheon

Representatives from 19 of the other 26 National Panhellenic Conference (NPC) groups joined Thetas at the Panhellenic Reception and Luncheon. Maureen Syring, Delta Gamma Fraternity's former president and alternate NPC delegate, delivered an eloquent and very entertaining speech on the values and responsibilities of Fraternity membership. Theta's alternate NPC delegates, Amy Kates, Alpha Phi/Tulane; Carol McPadden, Lambda/Vermont; and Helen Woodward, Alpha Omicron/Oklahoma, presented a tribute to former Theta president and current NPC delegate Lissa Bradford, Alpha Eta/Vanderbilt, who celebrated her thirty-fifth anniversary as a Kappa Alpha Theta volunteer.

Under the Golden Sun

Indian Wells, Calif. • June 23 - 26

Awards Banquet

The Efficiency Cup was the first Convention award ever presented. It was given to the Lambda Chapter at Vermont by Grand President Hope Davis Mecklin at the 1917 Convention in Charlevoix, Mich. At the 2004 Awards Banquet, 90 first-place awards and 43 runner-up awards were presented to college and alumnae chapters. For a complete list of award winners, please turn to page 14.

Fun Night

Pop songs with California/beach/summer themes performed by the band Coral Reef set the tone for Fun Night, an evening of relaxation and revelry. The event theme was "California Dreamin'," and Thetas enjoyed dancing surrounded by beach-party decorations.

Other Events

At the Chapter Birthday Celebration Breakfast, 22 college and alumnae chapters observed significant (25-, 50-, 75-, and 100-year) anniversaries from the 2002-04 biennium. The Eta Lambda Chapter at Santa Clara, celebrating its first anniversary, and the re-established Beta Upsilon Chapter at British Columbia were also recognized.

Nikê, a ritual service performed at every Grand Convention, preceded the first business session. The Parade of Flags—in which each college chapter is announced by the Fraternity president and each chapter president marches with her chapter's flag—preceded the third business session.

Procession and Convention Banquet

To conclude Convention, each participant lined up behind the current president of her chapter of initiation, who carried the chapter flag. Beginning with Alpha and ending with Eta Lambda, hundreds of Thetas walked silently between rows of other Thetas to be finally seated in the elegantly decorated banquet room.



Retiring Fraternity President Mary Jane Beach installed the new Grand Council; Fraternity Vice-President College Kathleen Markey, Chi/Syracuse, honored Beach and Kathy Salvemini, Gamma Mu/Maryland, as retiring Council members.

Thank You, Sponsors!

MJ Insurance, which specializes in writing property and casualty insurance programs for women's fraternities, sponsored the tote bags that each Convention attendee received at registration. **Vera Bradley**, recognized for their stylish and practical luggage and accessories, provided a quilted cosmetic bag for each attendee.



2002-2004 Alumnae and College Award Winners

Most Improved in Scholarship Award

ΔY/Eastern Kentucky
Runner-up ΓT/Tulsa

Highest Scholarship Award

A M/Missouri
Runner-up B/Indiana

Improvement in Scholarship

Programming Award

A O/Oklahoma
Runner-up M/Allegheny

Scholarship Programming Award

O/USC
Runner-up EΠ/Bucknell

Clementine Allen Facility Director Award

A O/Oklahoma
Runner-up P/Nebraska

Improvement in Advisory Board Award

Ψ/Pacific
Runner-up ΓP/UC Santa Barbara

Advisory Board Award

ZN/UC Davis
Runner-up E Z/Mississippi

Excellence in Alumnae Relations

ΔZ/Emory
Runner-up P/Nebraska

Improvement in Financial Operations Award

(under \$75,000) ΓΘ/Carnegie Mellon
Runner-up AΠ/North Dakota

Excellence in Finance Award

(under \$75,000) A N/Montana
Runners-up ZM/MIT, ZX/Johns Hopkins

Improvement in Financial Operations Award

(\$75,000 - \$200,000) B P/Duke
Runner-up ΓT/Tulsa

Excellence in Finance Award

(\$75,000 - \$200,000) A T/Cincinnati
Runner-up ΔO/Alabama

Excellence in Finance Award

(\$200,000 - \$300,000) ZN/UC Davis
Runner-up AΣ/Washington State

Improvement in Financial Operations Award

(\$300,000+) AΓ/Ohio State
Runner-up ΔK/LSU

Excellence in Finance Award

(\$300,000+) B Z/Oklahoma State
Runners-up BΔ/Arizona, K/Kansas

Best Alumnae Chapter Operations Award

(50 or fewer members) St Paul

(51 - 125 members) Northern Virginia
 (126 - 200 members) San Antonio
 (200+ members) Greater Kansas City

Improvement in Administration Award

(with a facility) ZN/UC Davis
Runner-up Ψ/Wisconsin
 (without a facility) B T/Denison
Runner-up ZH/Wofford

Excellence in Administration Award

(with a facility) ΔZ/Emory
Runner-up A O/Oklahoma
 (without a facility) ZY/UT Dallas

Alumnae Philanthropy Award

(50 or fewer members) Bloomington
 (51 - 125 members) New Orleans
 (126 - 199 members) Nashville
 (200+ members) Denver

Excellence in Community Service Award

B Z/Oklahoma State
Runner-up A M/Missouri

CASA Award

ΔK/LSU
Runner-up ΔH/Kansas State

Signature Philanthropy Award

A O/Oklahoma
Runner-up ΔK/LSU

Each biennium, outstanding college and alumnae chapters are recognized at the Convention Awards Banquet. Winning any Convention award is a notable achievement, and the alumnae Theta for a Lifetime award and the college Founders Award honor the "best of the best."

Dallas Alumnae Chapter

Awarded for the first time in 2004, the Theta for a Lifetime Award recognizes an alumnae chapter that continually exceeds all expectations of alumnae chapters. "During the process to select the alumnae award winners, one alumnae chapter was always at or near the top of each category," said Fraternity Vice-President Debbie Bornmann Allen, Delta Theta/Florida, when she announced the Dallas Alumnae Chapter as the winner of this special award.

During the 2002-04 biennium, the Dallas chapter—already a large group—increased its membership by 14 percent, to 602 members. Thirty percent of those members actively participated in chapter operations, and 60 to 70 percent attended some type of meeting or belonged to a chapter interest group. "Their programming is absolutely phenomenal," says Alumnae District President Michelle Mahoney Urteaga, Gamma Psi/TCU. "More than 75 events are held throughout the year, and they offer some amazing speakers. Their interest groups include a lunch bunch, night kites, brown baggers, a bridge group, pansy pals (with new members at SMU), and a mothers club."

Since its founding in 1925, the Dallas Alumnae Chapter has also excelled in philanthropy, raising money for the Kappa Alpha Theta Foundation; scholarships; and national and local charities, including CASA, through a variety of signature fundraisers. During the 2002-04 biennium, the chapter raised more than \$115,400 through the Parade of Playhouses and the Festival of Trees.

"But there was something else that stood out about the Dallas Alumnae Chapter," Allen explains. "It was that they were a group that truly lived 'Theta for a Lifetime.' This was evidenced by their cooperative spirit and willingness to do what was in the best interest of the Fraternity and their sisters."

AO/Oklahoma

In 2000, members of the Alpha Omicron Chapter at Oklahoma set winning the Founders Award as a goal they wished to achieve, reports Ruth Killion Miller, Epsilon Epsilon/Baylor, former college district president. In 2004, 12 chapter members, the advisory board chairman, and eight alumnae were present at the Awards Banquet when Alpha Omicron was announced as the Founders Award winner.

When she announced the award, Fraternity Vice-President Kathleen Markey, Chi/Syracuse, lauded Alpha Omicron members for their commitment to highest scholarship (Last year, they broke campus records not only with their chapter GPA but also with the new members' GPA.) and community service.



Excellence in Public Relations Award

ΔZ/Emory
Runner-up ΑΓ/Ohio State

Chapter Website Award

ΑΟ/Oklahoma
Runner-up Π/Nebraska

College Panhellenic Award

BM/Nevada

Best Alumnae Chapter Programming/ Education Award

(50 or fewer members) La Cañada
 (51 - 125 members) *First Place* Seattle
Honorable Mention Houston NW
 (126 - 199 members) Atlanta
 (200+ members) Dallas

Improvement in Member Orientation Program Award

ZN/UC Davis
Runner-up B/Indiana

Member Orientation Program Award

ZH/Wofford
Runner-up K/Kansas

Improvement in Balanced Woman Member Education Program Award

ZN/UC Davis
Runner-up B/Indiana

Balanced Woman Member Education Program Award

K/Kansas
Runner-up ZH/Wofford

Improvement in Ritual Appreciation Award

BM/Nevada
Runner-up B/Indiana

Excellence in Ritual Appreciation Award

(with a facility) K/Kansas
Runner-up ΑΣ/Washington State
 (without a facility) ZY/UT Dallas
Runner-up ΕΩ/Washington & Jefferson



Best Alumnae Chapter Support to a College Chapter

(50 or fewer members) Santa Barbara
 (51 - 125 members) Waco
 (126 - 199 members) Nashville
 (200+ members) Phoenix

Improvement in Recruitment & Member Selection

(400 or fewer women in formal recruitment) BK/Drake
Runner-up ZΛ/Charleston
 (more than 400 women in formal recruitment) I/Cornell
Runner-up Ψ/Wisconsin

Excellence in Recruitment & Membership Selection

(400 or fewer women in formal recruitment) ΒΛ/William & Mary
Runner-up ZM/MIT
 (more than 400 women in formal recruitment) ΑΟ/Oklahoma
Runner-up ΑΜ/Missouri

Excellence in Recruitment Programming

B/Indiana
Runner-up K/Kansas

Improvement in Member Development Award

ΓΜ/Maryland
Runner-up ZN/UC Davis

continued, page 16

(Their annual 5K run is a very popular event, raising \$13,000 last year for CASA.)

Markey also pointed out that the chapter was selected by the president of the University of Oklahoma to receive the President's Trophy, which is awarded to the women's group best representing the campus. In addition, Alpha Omicron has received the Panhellenic Award of Excellence, the highest honor from their campus Panhellenic.

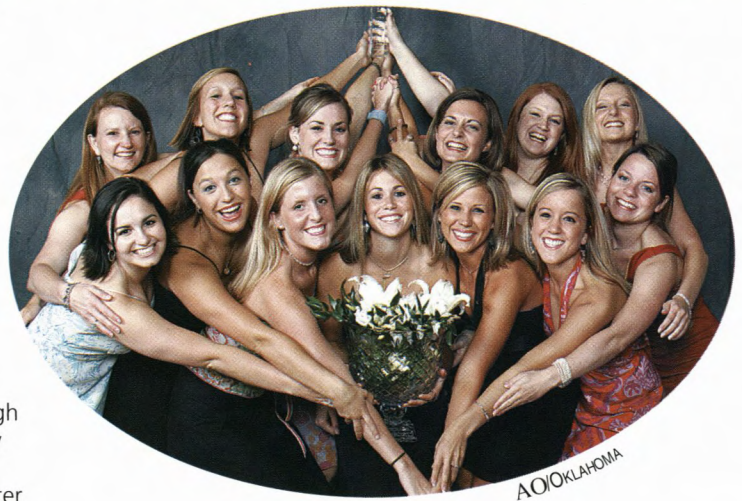
Says Ruth Miller, "They are an excellent example of how following Theta principles, believing and cherishing ritual, and developing strong bonds of sisterhood can make great things happen."

Advisory Board Chairman Jill McKenzie Bailey, Alpha Omicron/Oklahoma, agrees. "The Alpha Omicron collegians are an amazing group of women who strive to uphold the high ideal of Kappa Alpha Theta in all areas of their lives. I am very proud to be a part of such an outstanding chapter."

Along with the Founders Award, the Alpha Omicron Chapter received seven additional awards at Grand Convention 2004.

One of these was the Clementine Allen Facility Director Award, which honors the outstanding "house mother" at a Theta facility. According to both Markey and Miller, the members of Alpha Omicron feel that their facility director, Jeannie Frazier, is truly just like a mom.

"While she has grown children of her own, Jeannie has



taken on the responsibility for the young women living in the house just as a loving mother would," says Miller. "She is active in the life of the facility and is a friend of each resident, but she also respects their space."

Last year, Frazier was also recognized by the University of Oklahoma as the most outstanding facility director.

Award Winners, continued from page 15

Excellence in Member Development Award

$\Delta\Omega$ /Texas A&M
Runner-up P/Nebraska

Improvement in Risk Management Award

Ψ /Wisconsin
Runner-up ZN/UC Davis

Excellence in Risk Management Award

BZ/Oklahoma State
Runner-up ΓT /Tulsa

Risk Management Programming Award

Z Σ /Ohio Northern
Runner-up ΔH /Kansas State

Most Improved Alumnae Chapter or Former Alumnae Club

(50 or fewer members) Arlington, New Jersey North Central, Cincinnati
(51 - 125 members) Boston
(126 - 199 members) Philadelphia
(200+ members) Oklahoma City

College Chapter Forward Award

A E/Brown
Runners-up
EZ/Mississippi,
A Π /North Dakota

College Chapter Golden Kite Award

O/USC,
K/Kansas,
P/Nebraska,
A E/Brown,
A M/Missouri,
A O/Oklahoma, A P/South Dakota, A Σ /Washington State, BZ/Oklahoma State, B Λ /William & Mary, ΓT /Tulsa, $\Gamma \Phi$ /Texas Tech, $\Gamma \Psi$ /TCU, ΔE /Arizona State, ΔH /Kansas State, $\Delta \Omega$ /Texas A&M, EY/Columbia, ZN/UC Davis, ZY/UT Dallas

Alumnae Chapter Founders Award

(50 or fewer members) Chicago NW
(51 - 125 members) Portland
(126 - 199 members) Atlanta
(200+ members) St. Louis



Theta for a Lifetime Award

Dallas

College Chapter Founders Award

A O/Oklahoma



Under the Golden Sun



2004-06 Grand Council. Carole Frankovich Brophy, Anne Sadler Budill, Katie Busby Morrow, Kathleen Markey, Karen Albrecht Ledbetter, Debbie Bornmann Allen, Lyn Stewart Simensen, and Amy Hayner Kates.

2004-2006 Grand Council

Fraternity President Karen Albrecht Ledbetter, $\Gamma\Gamma$ /Tulsa, is newly elected to this position. She previously served as Fraternity vice-president public relations and Fraternity vice-president finance and facilities; she also served several terms as alumnae district president. She is active in the Houston Northwest Alumnae Chapter, having served as the group's president, and has participated in numerous initiation ceremonies at college chapters in the US and Canada.

Ledbetter is retired from her position as a manufacturer's representative; she was also formerly the owner of an interior design firm. She served as the first woman president of her Rotary Club in the Houston area and is a founding member of her church.

Kathleen Markey, X /Syracuse, begins her second term as **Fraternity vice-president college**. She is an attorney with previous risk management and conflict resolution experience. Markey has served as a facility corporation district director and is on the board of the Denver Alumnae Chapter.

Retired from her full-time legal practice, she continues to work as a tax consultant as well as provide pro bono legal services to domestic violence victims. She serves on the Board of Project Safeguard, a Colorado legal-advocacy organization for domestic-violence victims, and as president of the Safeguard Foundation.

Also beginning her second term is **Fraternity Vice-President Alumnae**

Debbie Bornmann Allen, $\Delta\Theta$ /Florida. She previously served for eight years as a trustee of the Foundation; as FVPA, she continues in this role. Allen has also served as a college district president and director of college chapter finance for the Fraternity. Additionally, she has been president of the Miami Alumnae Chapter and the Volusia County Alumnae Club and served on the advisory and facility corporation boards for the Delta Theta, Epsilon Theta, and Eta Theta Chapters at Florida, Stetson, and Central Florida, respectively.

Allen's community involvement includes the board of the Museum of Arts and Sciences, the Junior League, PACE Center for Girls, and Leadership Daytona Steering Committee.

Carole Frankovich Brophy, AN /Montana, is newly elected to the position of **Fraternity vice-president public relations**. She previously served as director of extension research, as an administrative district director, as a finance district director, and as a college district president. Brophy has also been advisory board chairman at both the Beta Delta and Beta Sigma Chapters at Arizona and SMU.

Fraternity Vice-President Education Katie Busby Morrow, EZ /Mississippi, is beginning her first term in this position. Previously, she served as Fraternity vice-president membership, as a membership district director, and as a membership regional director. She has also been a member of the

advisory board of the Epsilon Epsilon Chapter at Baylor.

Morrow works as a visiting research associate at Indiana University-Purdue University Indianapolis (IUPUI) where she conducts institutional research and student life assessments; she is also a doctoral candidate completing her degree in assessment and measurement. In her community, she has been a United Way volunteer and active church member.

Lyn Stewart Simensen, $\Gamma\Gamma$ /Rollins, begins her second term as **Fraternity vice-president finance and facilities**. She has previously served as alumnae district president, alumnae regional director, and director of alumnae support on the Extension Committee. She is a member of the Philadelphia Alumnae Chapter, and is a past president of the group, and has also been a member of the facility corporation board at the Beta Eta Chapter at Pennsylvania.

Simensen is a Stephen Minister and is active in her church. She is a retired independent campaign coordinator of church capital campaigns.

Amy Hayner Kates, $A\Phi$ /Tulane, is newly elected to the position of **Fraternity vice-president membership**. She previously served for seven years as Theta's 3rd alternate NPC delegate; she is also a former college district president, educational leadership consultant, advisory board chairman, and facility corporation board officer.

Kates and her husband are owners of Rope Access Technology USA; she is also a certified Jazzercise instructor. She is president of the Lakeview Presbyterian Weekday School Board and a Sunday-school teacher.

Foundation President Anne Sadler Budill, AX /Purdue, serves as an ex officio member of Grand Council without a vote. She has served as a Foundation trustee since 1998; her Fraternity experience includes serving as an alumnae district president and member-at-large of Grand Council in the 1980s. Budill has also been president of the Houston and Milwaukee Alumnae Chapters.

Currently director of development and public relations for the Fort Bend County Women's Center, Budill is also involved in her community through United Way and Junior League. She is past president of the Houston Chapter of the Association of Fund-raising Professionals, and she serves on the board of directors of the Hope Family and Child Center.



KAPPA ALPHA THETA FOUNDATION

...strengthens and empowers members through philanthropy and education.

2004 Scholarship Recipients



Storment



Santini



Eilers



Becherer

Founders Memorial Scholarship Recipients

Awarded to the four outstanding junior undergraduates

Bettie Locke Hamilton
\$10,000

Suzanna E. Storment
ΔΣ/Washington State

Suzanna Storment is enrolled in the honors program at Washington State University with a major in business law. She currently serves the Alpha Sigma Chapter as president and was previously recruitment chairman. After completing her undergraduate degree, she plans to become a corporate attorney. She says that in Theta she is "...continuously surrounded by an amazing group of women who support each other, learn with and from each other, grow with each other, and laugh with each other." Suzanna carries a 3.98 GPA and is from Endicott, Wash.

Bettie Tipton Lindsey
\$10,000

Taylor A. Eilers
ΔK/Louisiana State

Taylor Eilers is pursuing a major in English literature at Louisiana State University. She currently serves the Delta Kappa Chapter as vice-president membership, and was previously vice-president public relations. After completing her undergraduate degree, she plans to attend law school, and then become a corporate or international lawyer. Of her Theta experiences, she says, "The passion I feel for our bonds transforms sleepless nights and stressful days into joyful experiences that become more rewarding the harder I work." Taylor carries a 4.0 GPA and is from Destrehan, La.

Alice Allen Brant
\$10,000

Lara Santini
ΔO/Alabama

Lara Santini is enrolled in the honors program at the University of Alabama with a major in finance. She currently serves the Delta Omicron Chapter as vice-president finance, and was previously facility manager. After completing her undergraduate degree, she plans to become a financial analyst for the government. She says of her Theta sisters, "Being associated with people who challenge each other allows one to find the ultimate goodness in ourselves and others." Lara carries a 4.0 GPA and is from Mobile, Ala.

Hannah Fitch Shaw
\$10,000

Kathryn K. Becherer
AM/Missouri

Kathryn Becherer is enrolled in the honors program at the University of Missouri with a double major in biology and political science. She currently serves the Alpha Mu Chapter as vice-president membership and was previously vice-president development. After completing her undergraduate degree, she plans to become a physician and an advocate for health care issues. Of her Theta experiences, she says, "Because of the tools Theta taught me, I will always remember Theta, and I will do whatever I can to ensure others have the opportunity I have had." Kathryn carries a 4.0 GPA and is from St. Louis, Mo.

♦**Betty B. and James B. Lambert** • \$8,000

Jennifer Bomholt Bute, ΔΣ/Ball State
Ilana M. Ruff, AE/Brown
Lindsay L. Sell, BΓ/Colorado State

♦**Betty B. and James B. Lambert** • \$7,000

Brooke Albert, ΔΘ/Florida
Lindsay R. Barclay, HH/Albertson College
Lindsey M. Haller, P/Nebraska
Lesley E. Jarrett, ΓΦ/Texas Tech
Anna M. VanDuzer, AP/South Dakota

♦**Betty B. and James B. Lambert** • \$6,000

Jacqueline Y. Moro, BΞ/UCLA

♦**Betty B. and James B. Lambert** • \$4,500

Andrea E. Ebert, HH/Albertson College
Betsy S. Eide, AP/South Dakota
Shelby Freedman, AE/Brown
Amber Johnson, ΦΔ/Stanford
Holly D. Marvin, ΓT/Tulsa

♦**Betty B. and James B. Lambert** • \$3,000

Laura E. Haehl, AX/Purdue
Erin M. Huss, AΠ/North Dakota
Melissa McCutcheon Picard, ΔK/Louisiana State
Elizabeth Ashley Warren, ΓI/Kentucky

Betty B. and James B. Lambert • \$2,000

Kristen M. Addis, ZH/Wofford College

Caroline C. Ang, AE/Brown
Amanda K. Lewis, T/Northwestern
Amanda K. Shigeta, BΘ/Idaho

♦**Betty B. and James B. Lambert** • \$1,500

Kristin Jones Barr, ΔΣ/Ball State
Emily N. Childs, X/Syracuse
Carolyn F. Duvall, ΔΣ/Ball State

♦**Betty B. and James B. Lambert** • \$1,000

Lisa M. Abbot, ΔΘ/Florida
Erica Allgyer, I/Cornell
Jackie M. Barber, AP/South Dakota
Courtney Newkirk Barnes, AΦ/Tulane
Jennifer E. Bracey, ZA/College of Charleston

Congratulations to our 215 scholarship recipients, receiving \$521,250 in 2004!

Amber S. Brady, ΓΦ/Texas Tech
 Jessica L. Calvin, ΖΡ/UC San Diego
 Jennifer A. Campbell, Α/DePauw
 Shirley M. Catoire, ΔK/Louisiana State
 Amanda M. Dault, ΓI/Kentucky
 Elizabeth J. Davis, ΔΦ/Clemson
 Paige L. Elisha, Φ/Pacific
 Carly A. Ellefson, ΑP/South Dakota
 Elizabeth S. Frick, ΓΥ/Miami
 Miranda Gass-Donnelly, ΒΨ/McGill
 Erin Conlan Gottman, EI/Westminster College
 Jennifer F. Guinto, ΑΓ/Ohio State
 Deepti Gupta, ΑΛ/Washington
 Suzanne M. Hakar, ΒΓ/Colorado State
 Meghan T. Hassler, Β/Indiana
 Kristen L. Heins, K/Kansas
 Andrea L. Howard, ΖΟ/Wake Forest
 Amber Crissup Hunter, ΒΖ/Oklahoma State
 Jennifer L. Jackson, ΖΗ/Wofford College
 Nicole Lovre Laughlin, ΑP/South Dakota
 Kelley R. Leaverton, ΓΦ/Texas Tech
 Jodi Lebow, Ψ/Wisconsin
 Kate MacKenzie, I/Cornell
 Kate C. McDonald, ΔΖ/Emory
 Monica K. Melchionni, ΒP/Duke
 Ashley S. Nevin, ΓΨ/TCU
 Karen Owen, ΒΖ/Oklahoma State
 Kendra L. Patterson, ΓI/Kentucky
 Pinkee K. Patel, ΗΘ/Central Florida
 LeAnne E. Rawls, ΖΗ/Wofford College
 Anna R. Robinson, ΒΓ/Colorado State
 Lisa M. Rump, ΓΘ/Carnegie Mellon
 Nicole L. Scott, ΓΤ/Tulsa
 Dianna Sisas, ΓΜ/Maryland
 Kristin L. Starnes, ΖΗ/Wofford College
 Michele L. Taubman, ΔΖ/Emory
 Lisa B. Trader, ΕΑ/Dickinson College
 Margaret Walker, ΓΜ/Maryland
 Sallie E. Watson, ΖΗ/Wofford College
 Clare L. Whipple, ΖΑ/College of Charleston
 Jillian S. Yarnall, ΕΜ/Princeton

♦Educational Leadership Development \$5,000

Rachel A. Gregorn, ΒΜ/Nevada
 Carleen M. Lucas, ΖN/UC Davis
 Erin N. Tucker, ΔK/Louisiana State
 Linsay Warren, ΔΖ/Emory
Theta Link • \$6,000
 Claire S. Zeigler, K/Kansas
Theta Link • \$3,200
 Melissa A. Colgan, ΔΗ/Kansas State
Theta Link • \$3,000
 Tara B. Dinslage, Ρ/Nebraska
 Nicole L. Faurot, ΔΖ/Emory
Theta Link • \$2,000
 Vanessa N. Gullett, ΒΖ/Oklahoma State
 Jeana C. Marinelli, Ο/USC
 Frances C. Ray-Earle, ΗI/San Diego
Theta Link • \$1,100
 Autumn B. Kline, ΕΩ/Washington & Jefferson
Theta Link • \$1,000
 Carrie A. Martin, ΑΠI/North Dakota
♦Theta Volunteer • \$1,350
 Mary Frances McClure Berg, ΔΞ/North Carolina

Educational Trust Funds
♦Alice Wilkey Poynter • \$1,750
 Margaret M. Held, Α/DePauw
Ann Wright Hart/Nashville Alumnae Chapter • \$1,500
 Carrie A. Colvin, ΑΗ/Vanderbilt
Anne Collins Mackey Memorial • \$2,075
 Brandi N. Howell, ΕΖ/Mississippi
Artye Beosemeyer Welch • \$1,250
 Elaine H. Lee, ΒΞ/UCLA

Avadana Millett Cochran • \$1,250
 Amanda G. Olson, ΑΑ/Washington
Beta Eta Chapter • \$2,000
 Lilangi S. Ediririkrema, ΒΗ/Pennsylvania
♦Beta Eta Chapter • \$1,500
 Diana M. Feinstein, ΒΗ/Pennsylvania
Beta Phi Chapter/Baer-Buell • \$1,325
 Di L. Wang, ΒΦ/Penn State
♦Betty Baur Lambert/Fairfield County, CT Alumnae Chapter • \$2,175
 Nicole Young Ireland, Τ/Northwestern
♦Betty Black Hatchett • \$2,450
 Kelly Howell Murphy, ΒΖ/Oklahoma State
Betty MacDonough Memorial • \$1,500
 Elizabeth J. Fetner, ΔΦ/Clemson
Carol Green Wilson • \$2,400
 Bethany L. Dailey, ΖΨ/Southern Mississippi
♦Catherine Tillyard McCord • \$1,500
 Elizabeth E. Crouch, Α/DePauw
Christa McCluggage • \$1,700
 Megan W. Eidman, Ο/USC
Denver Alumnae Chapter • \$1,525
 Meritt Baer, ΖΞ/Harvard
Diane Forst Stephens • \$1,000
 Alison Slipher, Α/DePauw
Dorothy Whitehurst Heard • \$4,900
 Cassandra G. Knapp, ΕΕ/Baylor
♦Elizabeth (Bessie) Ferguson McNair \$2,025
 Kathy Hertz, ΑΝ/Montana
Ellen Bowers Hofstead • \$4,000
 Jennifer B. Gasior, ΒΑ/William & Mary
 Andrea Hyser, Δ/Illinois
 Taylor R. Williams, ΔΕ/Arizona
Florence Abernathy Waldrop • \$1,625
 Arielle M. Copeland, ΔΩ/Texas A&M
Florence Benner Wylie • \$1,600
 Amanda K. Carmichael, Γ/Butler
♦Frances Strickland/Agnes Wright Strickland • \$2,025
 Meaghan A. Anderson, ΑP/South Dakota
Gamma Chapter • \$1,025
 Natalie A. Lambert, Γ/Butler
Harriett Fowler Brown/Kansas City Alumnae Chapter • \$2,000
 Corinne R. Deuel, K/Kansas
Harriett Fowler Brown/Kansas City Alumnae Chapter • \$1,000
 Virginia C. Budke, ΔΗ/Kansas State
 Sara A. Neiswanger, ΑΥ/Washburn
 Abigail J. White, ΔΗ/Kansas State
♦Harriett D. and C. Hollis Hull • \$1,325
 Jamie L. Spurrier, EII/Westminster College
♦Hazel Baird Lease • \$1,500
 Ashley E. Higgins, ΕΖ/Mississippi
Helen Edwards Woodward • \$1,425
 Ki A. Kallbrier, Φ/Pacific
Indianapolis Alumnae Chapter • \$2,150
 Sarah T. MacGill, Β/Indiana
Ines Abbott McCrary • \$1,000
 Paden A. Elliott, ΒΖ/Oklahoma State
Isabel Hanford Olmstead • \$2,100
 Shannon N. Murphy, Γ/Butler
♦Isabel McKenney Gates • \$5,425
 Rebecca S. Rowen, ΑP/South Dakota
Jane Brokaw Gallup • \$1,500
 Megan D. Nunn, ΒΜ/Nevada
♦Jane Iwert Ranna/New Orleans Alumnae Chapter • \$5,000
 Jessica L. Haggerty, ΔΚ/Louisiana State

Michelle R. Mouton, ΔΚ/Louisiana State
Janet Paine Peters • \$1,600
 Dana E. Henderson, ΖN/UC Davis
♦Jean Johnson Smith • \$6,375
 Kristin L. Rasmussen, ΒΞ/SMU
♦Jeanne Ross Miller • \$4,700
 Jessica S. Nelson, ΑP/South Dakota
Jenny Adams Crain • \$1,400
 Elizabeth A. Pollard, ΑΘ/Texas
Jill Morrison Memorial • \$1,125
 Virginia G. Armstrong, ΕΖ/Mississippi
Joan Wagner Essex • \$1,225
 Emily K. Schoen, ΓI/Kentucky
Josephine Brossard Stansfield Memorial \$2,100
 Virginia R. Stearns, ΕΖ/Mississippi
Joyce Ault Cordon • \$1,075
 Laura J. Guy-Haddock, ΒΨ/McGill
Joyce Drew Toombs Memorial • \$1,425
 Jessica M. Olexa, Γ/Butler
June Longworth Hardy • \$3,875
 Amy S. Weaver, ΓΤ/Tulsa
♦Katherine Sharpless Coyle • \$1,500
 Alison M. Dougan, ΖΞ/Ohio Northern
 Julie C. Covert, ΓΨ/TCU
 Kasey A. Hames, EII/Westminster College
 Jenise M. Honesto, Φ/Pacific
 Caren Lee, ΑΕ/Brown
 Erin N. Moeller, ΓΤ/Tulsa
 Erin S. Shinn, ΓΦ/Texas Tech
 Teresa M. Tostenrud, ΑΠI/North Dakota
Kelly T. Lawrence • \$1,000
 Lauren A. Gavin, ΖN/UC Davis
 Jenny A. Javernick, ΖN/UC Davis
♦Kimberly Orlin/Omega Chapter • \$1,175
 Jeannine L. Bernet, Ω/UC Berkeley
L. Pearle Green • \$2,500
 Julie M. Keen, ΖΨ/Southern Mississippi
Leslie M. Wilson • \$1,100
 Callie J. Lawrence, ΑΝ/Montana
♦Linda Moran Schmidt • \$6,175
 Anne F. Oswald, ΑΟ/Oklahoma
♦Louise Johnson Miller • \$6,375
 Robyn Reimer Aeschliman, ΑΥ/Washburn
Lucile Moore Garrett • \$3,325
 Paige A. Tebow, ΒΖ/Oklahoma State
Margaret (Margie) Mills Ruckert • \$1,100
 Kristi L. Charlson, K/Kansas
♦Margaret Killen Banta • \$2,375
 Julia M. Beien, ΑΨ/Lawrence
Margaret Killen Banta • \$3,000
 Julia B. Ruff, ΑΨ/Lawrence
♦Margery Dick Miller Memorial Scholarship Fund • \$5,200
 Mitzi K. Franks, ΓΦ/Texas Tech
Mariam Morrison • \$1,000
 Ashley L. Beeman, ΔΣ/Ball State
Marie Anderson Fitz • \$1,100
 Kathleen L. Boggs, ΒΚ/Drake
♦Marilyn Chesher Lynch • \$2,425
 Melissa Haggerty, ΔΚ/Louisiana State
Martha (Marty) Smith White • \$2,925
 Laura J. Cushman, ΒΕ/Oregon State
Martha DuMars Davis • \$1,350
 Erin M. Grennan, ΔΗ/Kansas State
Martha Wilson Clotworthy • \$1,000
 Ashley E. Forrest, ΖΞ/Ohio Northern
Mary Alice Horn Memorial • \$3,425
 Tara Lammers, ΑP/South Dakota

Mary and John Dengler • \$2,650

Kristine E. Sheedy, ΔH/Kansas State

Mary Frances Bowles Couper • \$2,300

Lindsay L. Garrison, EE/Baylor

Mary Jane Beach Scholarship • \$1,000

Sarah A. Sciarani, BM/Nevada

◆Mary Katherine Patterson/IE Chapter Memorial • \$1,175

Marion Lindsay Salter, EE/Baylor

◆Mary L. Hinkle • \$3,150

Jessica Lengsfelder, ΦΔ/Stanford

Mary Lynn Jessop Sisson • \$1,000

Bethany Brewer, A/DePauw

◆Mary Rees Gilliatt • \$2,175

Kerry E. Lenahan, ΓZ/Connecticut

Melissa (Lissa) Luton Bradford/**Nashville Alumnae Chapter • \$3,200**

Nancy Y. Chen, ZM/MIT

Breann J. Westfall, BΘ/Idaho

◆Minneapolis Alumnae Chapter • \$1,850

Janna L. Dosch, AP/South Dakota

Molly Kerrigan Six/Des Moines Alumnae Chapter • \$1,350

Jeannine C. Favier, BK/Drake

Molly Muntzel Smith • \$1,275

Elizabeth B. Dodson, BΞ/UCLA

Morna Elizabeth Dusenbury Memorial \$2,387.50

Jena A. Hellman, AΦ/Tulane

Monchanok Suddhiprakarn, AΦ/Tulane

◆Muriel Anderson Steed • \$2,525

Laci A. Stone, ΓΦ/Texas Tech

Nancy Cochran Abbey • \$1,000

Elizabeth J. Bell, EE/Baylor

Nancy France Alum • \$2,700

Allison Jenks, Δ/Illinois

◆Nancy France • \$2,700

Catherine Czachowski, Δ/Illinois

◆Nancynell Swaffield Bogdanovich \$2,725

Mary Geck, AΘ/Texas

◆Norma Anderson Jorgensen Fellowship \$1,400

Alison M. Bates, ΓΔ/Ohio Wesleyan

Oklahoma City Alumnae Chapter \$1,200

Katie M. Comerford, ΓΦ/Texas Tech

Opal Marshall McCelvey • \$1,425

Elizabeth Jensen, AΘ/Texas

Pasadena Alumnae Chapter • \$1,000

Kristin R. Heinen, ZN/UC Davis

Pauline Eiber Keeler Educational Trust Fund • \$1,000

Lauren E. Freidman, ΦΔ/Stanford

◆Pauline Snoke Jackson Memorial • \$2,450

Natalie M. Best, B/Indiana

Philadelphia Alumnae Chapter Memorial \$3,350

Erin K. Hicks, EIT/Bucknell

Ruth Hill Wilbur • \$2,275

Erin E. Marshall, BZ/Oklahoma State

Ruth Rabbe Hager • \$1,600

Emily H. Wolfing, ZI/Washington & Lee

Ruth Robie Lacy/Rosemary Longino \$3,000

Ansley Dillehay, ΔZ/Emory

Ruth Shoemaker/Betty Shoemaker Hage \$1,100

Kristyn W. Walker, I/Cornell

◆Seattle Alumnae Chapter • \$2,050

Ginelle M. Neumann, BΛ/William & Mary

◆Sharon Cirese Gassett Memorial • \$1,800

Jennifer Goodman, BΔ/Arizona

◆Sharon Cirese Gassett Memorial • \$1,075

Samantha B. Hunter, ΔZ/Emory

◆Shirley Shields Smith • \$2,000

Tara L. Creighton, AP/South Dakota

Sophia Scholar • Elise Lipscomb Ferguson • \$2,850

Holly L. Buntin, EZ/Mississippi

St. Louis Alumnae Chapter • \$2,975

Emily K. Arneson, AM/Missouri

◆Sue Farrell Supple • \$2,650

Leslie Denney Etheredge, ΓΩ/Auburn

◆Suzanne Nichols Lynn/Atlanta Alumnae Chapter • \$2,250

Hetal J. Doshi, ΔZ/Emory

Thelma Thickens Moran • \$1,700

Michelle L. Schafer, BT/Colorado State

◆Theta Charity Antiques Show of Houston Alumnae • \$3,200

Jann Marie Patterson, BΣ/SMU

Virginia Bryant Shilstone • \$2,450

Sarah M. Hassler, ZΨ/Southern Mississippi

◆Virginia Burns Boynton • \$2,225

Mariah E. Martin, AΨ/Lawrence University

Virginia Chain Schmid • \$2,600

Whitney L. Votava, P/Nebraska

◆Virginia Ford Hood • \$2,875

Emily A. Gray, ΓT/Tulsa

Virginia Hindman Freeman • \$5,000

Elizabeth A. Bains, BΣ/SMU

Eileen Jones, BΣ/SMU

Virginia Lauderdale Grimm • \$2,875

Kate M. Schaafsma, T/Butler

Virginia Martin McCune Memorial • \$1,150

Alison E. Himelhoch, BT/Michigan State

Virginia Speidel Edwards • \$2,125

Margaret Reising, AΓ/Ohio State

Willa Haverstick Dial • \$1,225

Jillian S. Maxey, BT/Michigan State

Scholarship recipients as of June 1, 2004. ◆denotes alumna scholarship

*The Foundation extends special thanks to the following chairmen for 2004:***Foundation Scholarship Committee**

Suzie Sterling King, ΓΦ/Texas Tech,

Chairman and Foundation Trustee

Jennifer Burns, ΓΦ/Texas Tech

Paula Owen, ΓΦ/Texas Tech

Scoring Committee Chairmen (undergraduate)

Lynn Jones Dexter, BΩ/Colorado College

Cristy Burnham Laier, T/Northwestern

Dotty Stalker Reehling, Γ/Butler

Scoring Committee Chairmen (alumna)

Anne Sadler Budill, AX/Purdue

Suzie Sterling King, ΓΦ/Texas Tech

Janet Paine Peters, BΩ/Colorado College

Local Scholarship Committee Chairmen

Patty Brehm, AY/Washburn

Merrie Morrissey Clark, AH/Vanderbilt

Alexandra Deasey, AΦ/Tulane

Joni Blackstone Fish, P/Nebraska

Janet Remy Griffith, BZ/Oklahoma State

Mary Hawkins, ΔO/Alabama
Tracy L. Henderson, ΔN/Arkansas
Linda Ihle Lewis, ΨW/Wisconsin
Carolyn Heiman McGrory, BH/Pennsylvania
Clara Perry, AΦ/Tulane
Carole Eargle Ritter, ΔZ/Emory
Sandy Brown Tucker, AΣ/Washington State
Ruth Rand Waldrop, AH/Vanderbilt
Rhonda Willing Wehking, AT/Cincinnati
Sharon Smith Wooldridge, BΣ/SMU**2003 Undergraduate and Graduate Reading and Scoring Committee Members**Sherla Jennings Alberola, BT/Michigan State
Lynn Foxhall Badswell, ΓΦ/Texas Tech
Margaret Haberman Baker, P/Nebraska
Edie Beir Bell, BT/Colorado State
Ardie Miller Boswell, H/Michigan
Jennifer Justice Bowen, ΓΨ/Texas Christian
Virginia Hintze Breedren, BΞ/UCLA
Nancy Bird Bueche, T/Kentucky
Kim Bowen Burrous, ΓΦ/Texas Tech
Maggie Means Crill, M/Allegheny
Wendy Jenkins Deal, ZP/UC San Diego
Sarah Klomp Fedirka, M/Allegheny
Mary Ellen Kutsenda Fitzsimonds, BK/Drake
Elizabeth Green Gavigan, ΓΞ/San Jose State
Lucinda Howell Greene, ΦΔ/Stanford
Jean Fergus Harris, K/KansasSuzanne Harder Hill, BZ/Oklahoma State
Jenny Goforth Hock, BK/Drake
Sandi Wahlstrom Hotchkiss, T/Northwestern
Kay Alexander Howard, ΓΦ/Texas Tech
Martha Taylor Jones, AΘ/Oklahoma
Karen Sloan Keane, BO/Iowa
Emily Howe Kookan, BΩ/Colorado College
Karen Lundeen Kurgan, T/Northwestern
Karen Albrecht Ledbetter, IT/Tulsa
Amy Hagen Louis, T/Northwestern
Marilyn Mann Lindquist, BΞ/UCLA
Marilyn Cheshier Lynch, ΓΦ/Texas Tech
Janet McNeill Merendino, BΞ/UCLA
Lydia Griffith Morrissey, T/Northwestern
Olivia Ford Munson, AΘ/Texas
Sally Lyne McSpadden, ΓΨ/Texas ChristianIngrid Metzler Nitzsche, AΨ/Lawrence
Melissa Frick Oakley, A/DePauw
Trudy Aichholz Rades, T/Butler
Liz Winfield Rigney, ΔΩ/Texas A&M
Jacqueline E. Robbins, ΔΘ/Florida
Jean Weiss Schaller, Δ/Illinois
Norma Donelan Stelle, T/Northwestern
Dolores LeFors Sura, AΛ/Washington
Katy Adinamis Sutter, T/Northwestern
Mary Jane Pratscher Taegel, AΘ/Texas
Pat Martinez Taylor, ΔΨ/UC Riverside
Mary Helen Hintze Teague, BΞ/UCLA
Julie S. Withers, BP/Duke
Marcia Milne Wright, ΔE/Arizona State
Billie Kolb Youngblood, AΨ/Lawrence

The Fraternity's **Frequent Fliers**

As ambassadors of the Fraternity, educational leadership consultants (ELCs) offer support, guidance, and new ideas as they visit each of Kappa Alpha Theta's college chapters in the US and Canada. The 2004-05 ELCs—ten highly experienced and enthusiastic young women—began their journeys at a consultant retreat during Grand Convention 2004. They gathered again in July for three weeks of intensive training in every aspect of Theta's programming, policies, and procedures. They began traveling for the Fraternity in August; except for holiday breaks, they won't stop until May.

During that ten-month period, Theta's ELCs will

traverse tens of thousands of miles, fly on hundreds of airplanes, sleep in dorm rooms, eat in school cafeterias, and live out of suitcases. They will educate college chapter officers on programming and policies, as well as on current issues facing today's college women. Along the way, they will gain organizational, management, and personnel skills. Many former ELCs feel, though, that the lifelong friendships they form during their tenure "on the road" is the most rewarding aspect of the job. These personal and professional experiences make the educational leadership consultant position one of the most coveted in the Fraternity.



I have enjoyed meeting Theta sisters throughout the United States and Canada during my travels as an ELC. I have found that we are much more similar than we are different. The values of Kappa Alpha Theta continue to mold each Theta throughout her experience and encourage us to become better individuals and strive to live lives exemplifying sisterhood, love, and loyalty.

- Leslie Fasone, B/Indiana,
Educational Leadership Consultant, 2003-2005



Jennifer Benda



Traci Blanton



Kateri Broussard



Jill Dittoe



Leslie Fasone



Kerri Ferrell



Lindsay Kosisko



Jillian Mathias



Courtney Sierk



Sara Springer

Jennifer Benda GP/UC Santa Barbara
 Hometown: Mission Viejo, Calif.
 Major: communication
 Phone: 888-526-1870, ext. 304
 E-mail: jenniferbenda@earthlink.net
 Theta Involvement: alumnae relations chairman, activities chairman, and sports chairman
 Honors and Activities: Student Leadership Club President, Walter H. Capps Leadership intern, Orientation Staff Advisor, Student Health Advisory Committee, Communication Assoc.

Traci Blanton BZ/Oklahoma State
 Hometown: Edmond, Okla.
 Major: journalism and marketing
 Phone: 888-526-1870, ext. 308
 E-mail: traciblanton@earthlink.net
 Theta Involvement: reference chairman, Ritual Committee, Alumni Relations Committee, Theta Rocks the Casa campus promoter and legacy night chairman
 Honors and Activities: KAΘ Development Award recipient, Edmond North Hall of Honor, Oklahoma Wholesale Grocers Association Scholar, President's Leadership Council Scholar

Kateri Broussard ΖΩ/Loyola Marymount
 Hometown: Newbury Park, Calif.
 Major: psychology
 Phone: 888-526-1870, ext. 336
 E-mail: kateribroussard@earthlink.net
 Theta Involvement: 2003-04 educational leadership consultant, president, member education chairman, charter class member, member development committee representative

Honors and Activities: resident advisor, LeaderShape scholarship recipient, Greek Council Slating Committee, Student Alumni Association, French Club, Campus Ministry, Outstanding Service and Leadership Award

Jill Dittoe A/DePauw
 Hometown: Wooster, Ohio
 Major: elementary education
 Phone: 888-526-1870, ext. 311
 E-mail: jilldittoe@earthlink.net
 Theta Involvement: president, Nominating Committee, Executive Recruitment Board and service chairman
 Honors and Activities: DePauw University Greek Educator Advocate Resource (GEAR), Homecoming Court

Leslie Fasone B/Indiana
 Hometown: Indianapolis, Ind.
 Major: marketing
 Phone: 888-526-1870, ext. 333
 E-mail: leslifasone@earthlink.net
 Theta Involvement: 2003-04 educational leadership consultant, service chairman, recruitment spirit committee, IMPACT representative
 Honors and Activities: Panhellenic Association President, UIFI graduate, Dean's Student Advisory Board, Fraternity and Sorority Expansion Committee, TiPS trainer, Union Board Selection Committee, Community Coalition on Alcohol Abuse

Kerri Ferrell ΔΥ/Eastern Kentucky
 Hometown: Waddy, Ken.
 Major: public relations
 Phone: 888-526-1870, ext. 331
 E-mail: kerriferrell@earthlink.net

Establish new chapters ~ Represent the Fraternity internationally ~ Make lifelong friends ~

Theta Involvement: president, vice-president public relations, service chairman, Member Development Committee, Nominating Committee, Bylaws Committee, Ritual Committee, Service Committee

Honors and Activities: Order of Omega, Kappa Tau Alpha Honorary Society, Director of Communication for the Student Government Association, Leadership Institute Scholarship Recipient; Delta Upsilon Outstanding Freshman, Sophomore and Junior; Chapter nominee for Greek Woman of the Year

Lindsay Kosisko ΓΖ/Connecticut

Hometown: Storrs, Conn.

Major: elementary/special education (BA and MA)

Phone: 888-526-1870, ext.332

E-mail: lindsaykosisko@earthlink.net

Theta Involvement: president, vice-president development, Development Committee, Service Committee, Spirit Committee

Honors and Activities: Order of Omega Honors Fraternity, Deans List, Mary Jane Thrall Memorial Award, NEAG School of Education Policy board member, Greek and Student Body representative for university president, Phillip Austin's Substance Abuse Task Force, Greek Judicial Board Member, Student Orientation Leader.

Jillian Mathias HI/San Diego

Hometown: Las Vegas, Nev.

Major: communication studies

Phone: 888-526-1870, ext. 335

E-mail: jillianmathias@earthlink.net

Theta Involvement: president, philanthropy chairman, convention awards chairman, community service chairman.

Honors and Activities: Panhellenic president, Order of Omega vice-president, Lambda Pi Eta Honorary Society, a Kappa Alpha Theta Foundation Scholarship recipient.

Courtney Sierk ΒΔ/Arizona

Hometown: Iowa City, Iowa

Major: elementary education

Phone: 888-526-1870, ext. 337

E-mail: courtneysierk@earthlink.net

Theta Involvement: vice-president education, recruitment chairman, awards chairman, Member Development Committee, Service Committee

Honors and Activities: Dean's List with Distinction, University of Arizona 2003 Homecoming Queen semi-finalist

Sara Springer ΒΩ/Colorado College

Hometown: Tucson, Ariz.

Major: English

Phone: 888-526-1870, ext.339

E-mail: saraespringer@earthlink.net

Theta Involvement: vice-president public relations, assistant membership chairman, scholarship chairman, Nominating Committee

Honors and Activities: Panhellenic Council, Student/Alumni Association, Dance Team, University tour guide

QUESTION:
What are you doing after graduation?

Join the 2005-2006 educational leadership consultant (ELC) team. It's a once-in-a-lifetime opportunity to visit college chapters across the continent, serving as an ambassador of the Fraternity.

ANSWER:
Theta has a job for you!

Join the 2005-2006 educational leadership consultant (ELC) team. It's a once-in-a-lifetime opportunity to visit college chapters across the continent, serving as an ambassador of the Fraternity.

Do you have what it takes to be an ELC? ELCs are enthusiastic and well-informed. They develop educational programs, lead workshops, teach problem-solving techniques, motivate members, and offer assistance and support to Theta's college chapters. They are role models, mentors, and guides.

To ensure that new consultants are comfortable in their role, a comprehensive educational session is held each summer at Fraternity headquarters in Indianapolis. ELCs receive training in every aspect of Theta's programming, policies, and procedures, as well as in effective communication, motivational techniques, and business etiquette.

If you are a graduating senior and are interested in serving Theta as an ELC, you may download the application from the Educational Opportunities area of www.kappaalphatheta.org or request an application by calling 800-526-1870. **Applications and supporting materials must be received no later than January 5, 2005.**

Support college chapters ~ Gain independence ~ See the "big picture" of KAΘ ~ Endless travel

Part of a Team, Making a Difference

A Theta, currently serving her second tour of duty in Iraq, finds satisfaction in a military career

By Erin Kretzschmar, AM/Missouri



It wasn't the social scene that first attracted Anita Trepanier, Zeta Sigma/Ohio Northern, to Kappa Alpha Theta. Instead, it was the young women in the cafeteria, assisting an injured freshman, who really made her think about "going Greek."

"Following a sports injury, I had surgery the November of my freshman year," Trepanier explains. "Some of my fellow athletes who were Thetas were especially helpful, carrying my tray at dinner and making sure I got around OK. It got me thinking about what good friends they were to each other and to me."

So as a sophomore, Trepanier participated in recruitment and became a member of the Zeta Sigma Chapter. "If Theta hadn't picked me, I wouldn't have gone Greek," she admits. "They had everything I wanted—sisterhood, a high GPA, and leadership."

With plans to attend law school following the attainment of her undergraduate degree in criminal justice and sociology, Trepanier found herself at home at Theta and with the group's strong focus on leadership, which, for her, included a stint as intramural coordinator. "I liked coordinating teams and getting athletic games organized," Trepanier says. "We did pretty well that year—we put together a softball team with the SigEps and won the championship!"

In addition to her Theta experiences, her role in the university's ROTC program and her family's involvement in the armed services also boosted her desire to serve and lead. And so her career plans changed. "I realized that I wanted to serve my country. I thought it was my duty, and I still do."

Military Service in Her Blood

With a retired US Air Force master sergeant as a father and brothers and cousins also in the armed forces, Trepanier realizes the desire to serve could be in her blood.

"We've had a family member in the military since World War I. My dad was upset that I joined the army instead of the air force," Trepanier says, laughing, "but he was very proud of me, and so was my mom."

So, after completing her undergraduate degree and finishing two years in the ROTC, Trepanier was commissioned—on her graduation day—as a second lieutenant in the US Army, bound for Fort Eustis in Hampton Roads, Va.

There, she completed the transportation officer basic course—six months of training in the logistics of the military's air/sea/rail/ground transportation. Following this basic train-

Anita Trepanier (above right), ZΣ/Ohio Northern, is serving her second tour of duty in Iraq, which began June 2004.

ing, Trepanier got her wish to see other parts of the world when she was sent to South Korea. There, her focus shifted away from transportation. "I became an ammunition control officer," Trepanier explains. "My office was in charge of all the ammo in Korea. I kept track of where most of it was stored.

"It was such an experience to be out of the United States, to really see what it was like to live in another part of the world. I got to be out on my own and got to feel that for the first time."

Her hard work in South Korea paid off, as Trepanier's first military promotion—one of many to come—came there: she became a first lieutenant in November 2000.

"A Lot of Challenges"

As her military career continued, Trepanier experienced various challenges—and she believes her college experiences with Theta helped along the way.

"It's what I always expected of Army life. There are challenges in being in charge of soldiers and millions of dollars of equipment. There's the challenge of coordinating leader-

ship styles and the testing of my abilities to persevere during demanding situations.

"In terms of being prepared, I believe my college years with Theta and the ROTC helped in that department," Trepanier says. "There's something about being part of a team and working toward a common goal. I did that in college, and I do that now in my work with the Army."

After spending time in South Korea, Trepanier landed back in the US for a stay at Fort Campbell, Ky. Her leadership training continued when she earned the responsibility of being a platoon leader. She also added the task of coordinating training for 2,600 soldiers as an executive officer of the 594th Transportation Company. Soon, she was a lieutenant promotable, which, Trepanier explains, is equivalent to being a captain. She planned field-training exercises, convoy life exercises, and physical training.

Captain Anita Trepanier

The highest achievement of Trepanier's military service, thus far, came October 1, 2002, when she became a captain. Shortly after came the biggest challenge, thus far, of her Army career—a tour of duty in Iraq.

"In March 2003, I was deployed in support of the 101st Airborne Division

for Operation Iraqi Freedom. As a battle captain, I tracked movement of convoys, wrote reports for serious incidents, and kept battle update briefs on information coming in and out through us."

Her unit traveled throughout Iraq; they started in Kuwait and traveled to a classified location south of AnNajaf; the group then moved south of Baghdad; and their final location was Mosul, in northern Iraq. As they moved through the country, the extremes in Iraqi living conditions surprised Trepanier the most. "The destitute areas in certain parts of Iraq are pretty extreme," she summarizes.

The soldiers faced their own challenging living conditions, including going for two months without a real shower. "We had camp showers, which we built out of plywood," Trepanier says. "But we didn't have running water until we reached Mosul, two months into the operation."

The unit also did all their laundry by hand. "You hoped for no sandstorms on wash day," Trepanier explains. "Otherwise, you had to start all over to get clean clothes!"

Arriving in Mosul not only brought Trepanier an actual shower ("It was ice-cold water, but I didn't care. I slept so well that night . . . there's nothing like having a shower!"), but there were

also other "perks," including the receipt of mail from home and e-mail access to family members in the U.S.

"I was able to call home once a week for about 10 minutes, so I kept up on all the happenings back in the States," Trepanier said. "Receiving mail was great, too, although delivery took from 14 to 21 days."

And in Mosul, Trepanier got a first-person look at one of Sadaam Hussein's palaces. "It had everything you'd imagine seeing in a million-dollar home—hand-carved wood, marble tile, gold imbedded in the artwork," Trepanier recalls. "It was unreal to walk into it, because you knew over the wall surrounding that palace were earthen huts where poor Iraqis live."

After a military meeting at the palace, Trepanier and her colleagues enjoyed a view of the Tigris River from one of the many balconies that she calls "awe-striking" and "breathtaking."

Back for More

Although she felt she gained insightful experiences in Iraq, Trepanier—like many military women and men stationed overseas—welcomed her return to the US in July 2003. She quickly completed the combined logistics captain career course, which further solidified her training and knowledge in her current position.

Trepanier (left) says soldiers face their own challenging living conditions, including doing their own laundry by hand.

Anita loves mail from home!

Anita and her colleagues enjoy hearing news from the US during their time overseas.

Please feel free to write to her at:

Anita Trepanier

210th FSB (HHC)

Commando BDE, 10th MTN DIV

APO AE 09303

She can receive letters as well as care packages including non-perishable food items (beef jerky, snack cakes, etc.) and books.



CONNECTIONS

FOR SALE: WATERFRONT HOME, ST. PETERSBURG, FLA (*Madeira Beach community*). Lot 60 by 110; 2,020 square feet, 2 BR/2BA; deep-water dock. Home on a finger in Intracoastal Waterway; water surrounds. Photos available. Susan Danforth Shuey, 814-667-3471.

LAQUINTA, CALIF. (*near Palm Springs*). Luxury rental townhouses located on the Mountain Golf Course of the La Quinta Resort. Lovely homes with private spas. Ideal setting for reunions. Gated community Resort facilities available on a fee basis. Log onto our website: [www.desertluxuryrentals.com/Casa de Cordi](http://www.desertluxuryrentals.com/Casa%20de%20Cordi), or request a color brochure by calling 310-454-6092. ◆

KAΘ CONNECTIONS AD FORM

Please type or print ad message, attach to this form, and submit to the editor along with your check payable to KAΘ.

- Copy deadline dates are on page 2.
- Ads are limited to 35 words each

Ad(s) to run in this issue of *The Magazine* (check one or more):

Spring Summer Autumn Winter

No. of ads ____ x \$40 each x no. of issues ____ = \$ _____

NAME _____

CHAPTER/SCHOOL _____

(_____) PHONE _____

ADDRESS _____

Moving? New phone? Name change? E-mail?

If you have a change, please let Theta know! You may call, write, e-mail or access our web site:

KAΘ Fraternity Headquarters
8740 Founders Rd.
Indianapolis, IN 46268

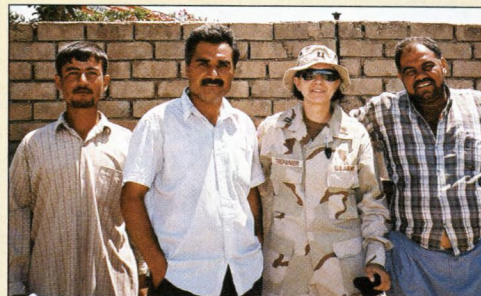
317.876.1870 • 1.800.526.1870
e-mail info@KappaAlphaTheta.org
www.KappaAlphaTheta.org

But Trepanier soon learned she'd be going back for another 12- to 18-month tour, beginning in June 2004. After a short stay at home, she said she has realized not only the importance of her role in Iraq, but also that of her country's.

"My focus is to get over there and do my transportation job. As a support operations transportation officer, all necessary movement of supply or personnel within our group goes through me.

"I've seen the improvements we've made—lines to villages with no running water, the building of schools, troops helping to plant fields. It's amazing to know more people can go out and have jobs and live their lives as they want because they aren't under persecution ... and I had a part in making that possible."

Trepanier has this advice to other



"It was such an experience to be out of the United States, to really see what it was like to live in another part of the world."

young women who are considering the same challenges of military service that she once did: "If you don't think you can do it, still try it. I've become a much better leader for being in the Army. My people skills have improved by working with all sorts of different folks and their different leadership styles." ◆

Theta Fun Facts

Number of initiated members: 189,079

Number of mailable alumnae: 123,213

Number of collegiate members: 11,436

Number of college chapters: 124

Number of alumnae chapters: 182

Number of alumnae paying per capita dues: 10,444

Are you one of the 10,444? If you are a member of an alumnae chapter, you are! Through your chapter, you have paid your per capita dues to Kappa Alpha Theta.

If you are not a member of an alumnae chapter, please consider paying the \$15 per capita fee individually. Per capita fees are due January 1 of each year. You may send a check to Kappa Alpha Theta, 8740 Founders Road, Indianapolis, IN 46268, or you may pay via credit card at www.kappaalphatheta.org.

Per capita dues are not tax-deductible.

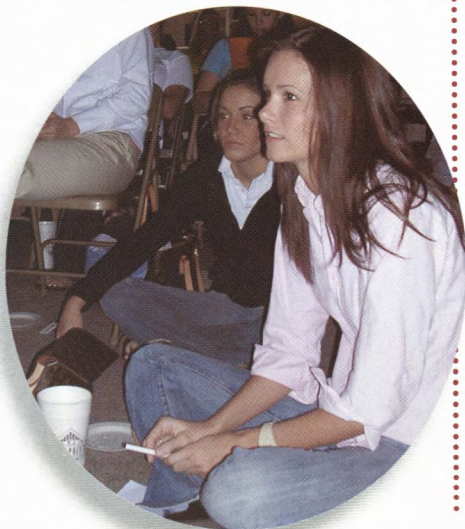
What happens when you put 120 Thetas, a relationship columnist, and a physician in one room? An outstanding combination of entertainment and education—not to mention a little *Pillow Talk!*

In an effort to raise awareness about a common, yet serious, women's health issue, Kappa Alpha Theta has partnered with Bayer Pharmaceuticals Corporation to educate Thetas across the country on the importance of recognizing the symptoms, risk factors and treatment options for urinary tract infections (UTIs).

Coined *Pillow Talk*, the program provides a humorous yet educational look into the world of personal health among college-age women. According to the *American Journal of Medicine*, nearly one in three women will have at least one UTI by the age of 24, and the *Annals of Epidemiology* reports that the lifetime risk of contracting a UTI is almost 60 percent. Knowledge, therefore, is key in educating young women on this prevalent, often overlooked health condition.

"Many young women suffer unnecessarily because they are unaware of the causes, symptoms, and treatment options associated with urinary tract infections," said Shelina Bhojani, manager of anti-infective marketing for Bayer. "*Pillow Talk* is an innovative program that aims to both educate and empower members of Kappa Alpha Theta to take control of their health through greater self-awareness and knowledge."

For the past two semesters, Kappa



Alpha Theta chapters at the University of Maryland, Southern Methodist University, Loyola Marymount, University of Georgia and Purdue have taken part in the *Pillow Talk* pilot program. Each event took the form of an intimate discussion about personal health issues and was twofold in approach. Amy Sohn, novelist and relationship columnist for *New York* magazine's "Naked City" column, delivered a lighthearted semi-fictional reading prepared specifically for these Thetas that addressed the embarrassment, misunderstandings, and stigma associated with UTIs that many college women may experience. Dr. Shari Fine, director of the medical education and family practice residency program at the University of Medicine and Dentistry of New Jersey, provided medical statistics and background information on UTIs and discussed the prevalence, causes, symptoms, treatments, and prevention methods.

Surrounding each pilot event, pre- and post-program surveys were distributed to chapter members to gauge their knowledge of UTIs prior to the program and the impact *Pillow Talk* had on their overall understanding of this women's health condition. Survey results revealed an increased level of knowledge of UTIs among Theta members after having attended the program. The results also indicated that members found the program to be "fun and informative," "intriguing," "straight to the point," and "perfect for college women."

Due to the overwhelming popularity of *Pillow Talk* among Theta members, international and regional officers, and local advisors, this year the program will be expanded to reach all of Kappa Alpha Theta's remaining chapters

Members of the Gamma Delta Chapter at Georgia participated in the *Pillow Talk* pilot program for two semesters.



nationwide. While the program will be slightly altered, the same general messages will be conveyed in both a lighthearted and compelling manner.

"*Pillow Talk* is an exceptional public awareness program that aims to educate young women on urinary tract infections in an informative, entertaining and creative way," said Kathy Salvemini, former Fraternity vice-president education. "Including this successful program in our overall educational programming is an exciting prospect."

Beginning this fall, *Pillow Talk* will take the form of a "program-in-a-box," which will enable all Theta members to have the opportunity to view this innovative women's health program. A video featuring a presentation on the basics of UTIs and a comical segment personifying real students' impressions of the condition and other intimate topics will be distributed to the vice-president education of every chapter for inclusion in her chapter's 2004-2005 programming. Members will also be provided with educational brochures and fact sheets on UTIs, courtesy of Bayer.

"The *Pillow Talk* program exceeded my expectations," said Liz Brown, Alpha Chi/Purdue. "The presentation was both beneficial and enjoyable, and I am thrilled that all Theta chapters will now have the opportunity to become better educated on this women's health issue." ◆

College Chapter Reports

"Tell us about your year," we said, and 55 chapters responded.

Γ/Butler

By Beth Clayton

The Gamma Chapter improved parent and alumnae relations during the 2003-04 school year and continued achievement in academics, sisterhood, and presence on campus.

Gamma alumnae and their children were invited to the chapter facility on Halloween for a night of trick-or-treating and again in April for an Easter egg hunt. Plans are also in the works for a Mother's Day and Father's Day event in the coming year.

In addition to the softball tournament, our annual Theta "Grill-Off" also included a hamburger-decorating contest and cheer-leading contest. Lots of laughs and good food, all to benefit CASA!

This year, Theta's average GPA was 3.495, well above the all-sorority average of 3.399. In addition, we enjoyed our development retreat at an indoor water park and held various sisterhood events.

K/Kansas

By Kelli Connelley

Kappa Chapter at the University of Kansas has had quite a year, including two annual philanthropy events. "Sun Run" is a September event in which participants walk/run in South Park of downtown Lawrence. All proceeds were donated to Douglas County CASA.

The University's Greek Recognition Night, held in March, highlighted Kappa Chapter's efforts within the Greek community at KU. Kappa Chapter was one of only five chapters on campus to receive recognition in all seven awards categories.

Homecoming week allowed us to shine



Kappa Chapter earned the overall first place award for their participation in homecoming activities.

as we brought home the overall award.

Kappa Chapter also donated more time and blood than any sorority in the fall and spring blood drives. In addition, we ranked second in grade-point average among all sororities on campus for the fall 2003 semester. The new-member class ranked third overall for all new-member classes.



The Omicron Chapter received eight awards at USC's Greek awards ceremony.

O/USC

By Stephanie Liebert

It is going to be hard for the Omicron Chapter to top the accomplishments of the 2003-2004 school year.

The year got off to an incredible start with one of our most successful recruitments ever. We welcomed 60 amazing new members who have continuously impressed us with their many talents and contributions!

Omicron's many athletes proved their prowess as they earned second place in USC's Panhellenic intramural flag football championships. At a scholarship dinner during we celebrated our 3.39 house grade point average, the highest Panhellenic GPA at USC.

After many years of raising money for Friends of Casa through a foosball tournament, Omicron built a successful new philanthropy event—Kat at Bat—from the ground up. We also enjoyed our father/daughter casino night and a

mother/daughter luncheon at the beach. The semester ended on a wonderful note when we received a total of eight designations at USC's Greek Awards ceremony.

Π/Albion

By Jill Cothery

The ladies of Pi Chapter have been very active on campus and in the community. Each week, a group visits a local nursing home; this gives us a chance to bond with one another while also spending time with the elderly in the community. We also held our first dance-a-thon in April and raised a large donation for CASA.

More recently, we held a hair and nails clinic at our lodge during little sibs weekend. We joined Sigma Nu, our Greek Week partners, in their philanthropy event, a charity basketball game against Alpha Tau Omega to benefit the Christopher Reeves Foundation.

P/Nebraska

By Dannie Deschene

Rho Chapter had another successful year with numerous accomplishments to be proud of. Academically, we improved our all-house GPA as well as surpassing the all-sorority average.

Our chapter was awarded the organization of the month on campus for putting on a service event for the CASA kids during Halloween. We

also sponsored a new event called Rock the CASA, with live bands, a cookout, and a raffle drawing.

Another proud moment for Rho Chapter occurred when we were awarded the Jeanne Ross Miller Trust Grant from the Kappa Alpha Theta Foundation. This grant enabled us to co-sponsor an alcohol awareness program entitled *Do It Sober*. This event was a huge success and was attended by the majority of our campus.

In addition to everything else, we have a new Rho Chapter website.

T/Northwestern

By Emmy Maynes

The twin stars were especially bright this year for the Tau Chapter. After kicking things off with a promotional Greek grill-off, we welcomed potential new members into our facility for a fall fireside. The campus-high turnout was a taste of things to come in the recruitment department. We stood out on

the map with exceptionally high return rates and a resulting 38-member pledge class.

We helped organize a spring gala benefit for the Chicago Abused Women Coalition, and three weeks later, we swung our racquets during the Theta-sponsored tennis classic fund-raiser. All proceeds were donated to Chicago's CASA program.

When it came to grades, Thetas hit the tennis ball out of the park. We achieved the highest grade point average of the Northwestern sororities for both fall and winter quarters. The 3.52 house average surpassed the Panhellenic average, and received a boost from 19 Thetas with solid 4.0s.

X/Syracuse

By Bana Najdawi

Chi Chapter had a busy year. On Halloween, we co-sponsored a party and haunted house to benefit the Boys and Girls Club of Syracuse. Also in October, we celebrated the 114th anniversary of our installation on the Syracuse campus, which was marked by a birthday cake and ice cream. The end of the Fall 2003 semester saw Theta sisters traveling to a nursing home to sing holiday carols with the senior citizens.

We welcomed a full new member class of 44 fabulous girls in the spring semester. At the year-end Greek Awards, our chapter received two awards. The end of the spring semester brought tearful goodbyes, as graduating seniors left Syracuse and Chi for the last time.

ΑΓ/Ohio State

By Alison McCartney

Alpha Gamma won the 71st Greek week competition in May. One of the events was a large-scale community service project, "Rock the Block," which was actually organized by two Thetas.

We also celebrated our scholastic greatness with a special dinner. We have held the highest GPA out of all sororities for both

Highlights of Greek week for the Alpha Gamma Chapter included first-place finishes in flag football and tug of war.



the fall and winter quarters, with 71 girls reaching a 3.0 or above in winter 2004.

Alpha Gamma traveled all over the world this summer, sending its members to Washington, D.C., New York City, San Francisco, Mexico, Italy, Spain, New Zealand, England, Ireland, and Egypt for study abroad and internship experiences.

ΑΑ/Washington

By Jackie Jensen

If there is one word to describe this year at the Alpha Lambda Chapter, it would be "dynamic." Fall recruitment was one of the best that Alpha Lambda has ever seen. With a total of 26 in the class, the new members quickly set about making a great name for our already reputable house.

Theta pride has been running high, and there isn't anything that could reflect this more than our CASA race, which raised more than \$5,000. We sponsored and put on an incredibly organized and effective race. The community was very involved, and we received an abundance of positive remarks.

ΑΜ/Missouri

The Alpha Mu Chapter celebrated a highly successful 2003-2004 school year. We began the year with a bang during recruitment, which brought 65 new members, meeting chapter quota.

"Main Event" marked another fruitful philanthropy year for Alpha Mu, as we met our fund-raising goals for the CASA project. In addition, we were educated on being CASA volunteers, and enthusiastically looked forward to the future of a local CASA chapter in Columbia, Mo.

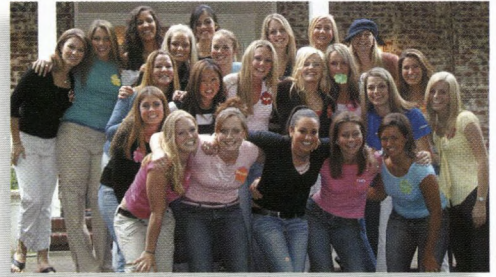
For more than 25 years, the Alpha Mu Chapter has emphasized scholarship. During the 2003 school year, we studied hard to finish proudly with a 3.44 cumulative GPA. In 2004 we were proclaimed "best chapter" by the University of Missouri Greek life system. We were also proud to place first in intramural sports for the 2003-2004 school year.

ΑΟ/Oklahoma

By Catie Click

Spring 2004 proved to be another outstanding semester full of achievements, honors and activities for the Alpha Omicron Chapter.

For the second consecutive semester, Theta was honored for the highest scholastic achievement on campus. We achieved a cumulative 3.426 GPA for the spring semester, breaking the Panhellenic record we set last fall.



Members of the Alpha Lambda Chapter were pleased with their efforts during recruitment and with their new member class.

In addition to the scholastic accolades, we were recognized for a tremendous performance in Sooner Scandals, taking home nine awards! In addition to Scandals, the first weekend in April brought with it mom's day. All the moms and daughters had a fabulous time eating, shopping and socializing.

Another one of our favorite activities in the spring was Casa del Theta. We invited all international students to our house for tacos, mingling and fun. It was a packed dining room and a blast for all of us!



South Dakota's dance marathon was one of many campus service projects supported by members of the Alpha Rho Chapter.

ΑΡ/South Dakota

By Jia Huber

The addition of 31 new members made the fall a very exciting time for the women of Alpha Rho. In October, we hosted the first Theta 5K to raise money for CASA. In addition, we supported several service projects on campus throughout the year, including SERVE projects, Dance Marathon, and Relay for Life. Earning the top GPA on campus for the 25th consecutive semester was also a large accomplishment!

With the men of Sigma Alpha Epsilon and Beta Theta Pi, we earned second place in the annual University of South Dakota Strollers show, while also receiving the first place backdrop award. We participated in Swingout this spring, capturing first place and best director award. At the Greek Awards Night, we received four chapter awards. Several individual awards were also

won by our members.

Our annual ice cream social was held in April to benefit CASA. At State Day, \$10,000 in scholarships were given out to various women in our chapter.



Members of the Alpha Tau Chapter at Cincinnati served as volunteers at a luncheon benefitting cystic fibrosis treatment and research.

AT/Cincinnati

By Amanda Miller

At the beginning of the 2003-04 school year, the University of Cincinnati welcomed a new president, Dr. Nancy Zimpher. Not only is Dr. Zimpher the first woman president of the University of Cincinnati, she is also an alumna of Kappa Alpha Theta.

In December, we hosted Dr. Zimpher, as well as 10 other faculty members, at a dinner to recognize the academic achievements of our women. Dr. Zimpher spoke of her experiences as a Theta and how she learned the importance of such things as dining etiquette and academic achievement. She stated, "Theta helped me to set academic standards because it was important to be viewed as an intellectual group."

Listening to her speech, we were able to recognize the many similarities between our experiences and hers as Theta women. However, there were also several differences. She mentioned how the recruitment process during the 1960s was confronted with serious political issues. She stated, "How much recruitment and the fraternity, during those years challenged me to find what I truly believed in and the moral grounds on which I would not compromise." It was an incredible experience for all of us, and we are lucky to have her as a role model on our campus and as a prime example of an accomplished Theta woman.

AY/Washburn

By Tiffany Wiles

The women of the Alpha Upsilon Chapter are very proud of the many accomplishments this year that combined to make us sorority of the year at Washburn University. We raised more than \$800 participating in Relay for Life, which supports

The American Cancer Society. We also raised more than \$300 for CASA by having a Spaghetti Feed. Our membership development includes watching "Must-See TV" every Thursday and having sisterhood

events as often as possible. In academics we were less than one point away from having the top grades of all the sororities on campus, and we were still above the all-Greek average. We have big plans for the fall semester, including recruitment and some

great fund-raisers for CASA.

BΓ/Colorado State

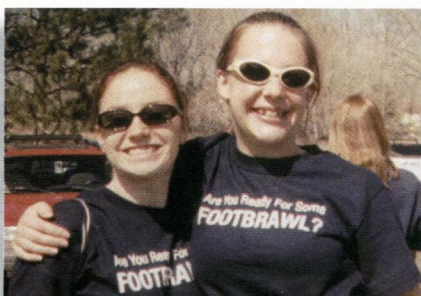
By Alycia Adams

From outstanding academics to flag football, the ladies of the Beta Gamma Chapter had a year of which to be proud. We have the second highest GPA, missing first by just a hair, among the sorority women on campus. We were also pleased to learn that our average GPA was higher than the all-women average at Colorado State.

Our annual philanthropy event, Footbrawl, was very successful. A total of twenty teams competed in the large flag football tournament, and overall, we raised more than \$2,220 for CASA. Later in the spring we hosted Community Kites, which is a day for local children to join us at a neighborhood park to fly kites.

When not busy with school and the community, we enjoy many fun social events. Our year was full with a winter gift exchange, ice cream socials, a St. Patrick's Day party, a seventies-themed roller skating party, a wonderful masquerade spring formal, and countless other fun events.

Starsa Duskin and Bess Leader took a break from cheering the flag football teams during Beta Gamma's Footbrawl fund-raiser.



BE/Oregon State

By Katie Groover

The women of the Beta Epsilon Chapter had a very fulfilling year. There were many chances to shine, and we took full advantage. We entered many of the other Greek philanthropies and took top awards in most of them. We held our own Theta Footbrawl, a football tournament to support CASA. We also held a Valentine's Day service project and an Easter egg hunt for the Boys and Girls Club of Corvallis.

Beta Epsilon worked hard to build the house from the inside out with two incredible sisterhood events. The Pampered Theta event was a huge success, with facials, massages and a chance for all of us to spend some time together. We are greatly anticipating recruitment this fall and hope to get many more women to see what they can do through Kappa Alpha Theta.

BZ/Oklahoma State

By Katie Willingham

This has definitely been a fun, exciting, and rewarding year for us in the Beta Zeta Chapter.

We were all excited to get back to Theta work week before formal fall recruitment. Everyone worked extremely hard, and it paid off with a wonderful new member class of 63 women! Many of these girls participated in OSU's annual Freshman Follies, paired up with the men of Phi Delta Theta, winning first place.

This year we enjoyed another Theta Rocks the CASA, raising a little more than \$10,000 for CASA. We also took first place in scholarship in the OSU Greek awards this year. We all worked very hard to keep up our GPAs. We are looking forward to another great year.

BH/Pennsylvania

By Cecelia Rabess

This semester, Beta Eta welcomed 49 girls into our new member class. The girls hail from all over the US and are active in all areas of the Penn community, including athletics, academics, political and social activism, as well as a host of other student clubs and organizations, and thus will certainly add to Theta's strong commitment to scholarship and service.

All of the members of Beta Eta have been active participants both inside and outside of Theta. Most notably, no fewer than four Thetas performed in a production of the *Vagina Monologues*; our lacrosse players, swimmers, field hockey team members and other athletes have made invaluable contri-

butions to the world of women's college sports at Penn and in the Ivy League; and one of our seniors has received the prestigious Fulbright scholarship.

BI/Colorado

By Carly Grimes

Beta Iota's kite flew high this past year. We exceeded quota with 71 new members, and we were recognized at the annual Greek awards ceremony for best recruitment and best risk management out of 10 sororities.

We had a blast raising money for CASA through two annual philanthropy events. Buff Bowl, a competitive flag football tournament, raised more than \$7,000. In the spring, we opened our doors to the CU campus and Boulder public for Theta Olé. The turnout was far better than expected—many people came to dine and enjoy music—and we raised more than \$2,500.

We have started two new community service projects. At Halloween, we invited a local bilingual elementary school to "Trick-or-Treat Street" at the Theta house. We also adopted two underprivileged families for Christmas, and the families' wish lists were fulfilled through member contributions.

Thetas embodied sportsmanship and fun as we formed Theta intramural volleyball, kickball and broomball teams.

BA/William & Mary

By Elizabeth Derby

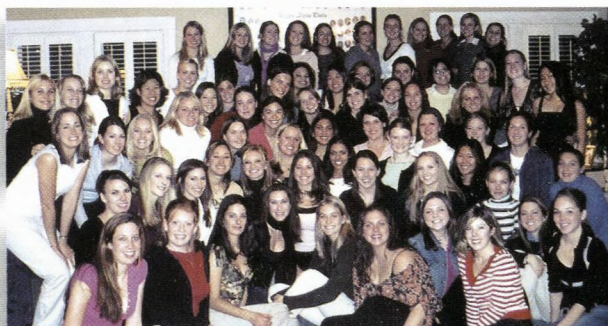
"Work hard, play hard." This year, the Beta Lambda Chapter proved its mastery of the William & Mary mantra by combining sisterhood events with group excellence and service. Our fall and spring philanthropies raised more than \$3,000 to benefit CASA. Students waited in lines stretching out the front door at Fiesta de la CASA, an all-you-can-eat taco dinner, while the unveiling of the new Theta Twister tournament boasted more than 100 participants. We all participated in various Greek fund-raising events during the year; most notably, we won Sigma Chi's Derby Days, earning the prize of a sizeable donation to CASA.

We continue to meet the academic rigors of William & Mary with practical determination and effort, meriting an overall GPA well above the all-sorority average.

BM/Nevada

By Stephanie Sciarini

The Beta Mu Chapter received many prestigious awards throughout the 2003-2004 school year. Our success started off at



The Beta Mu Chapter's accomplishments were recognized with several awards from the University of Nevada.

the annual all-Greek ball, where we were awarded best chapter of the year. We also received the best scholarship award. Our chapter has had the highest GPA on our campus for eighteen of the past nineteen semesters. We take great pride in our academics and were thrilled to be recognized for our extraordinary accomplishments.

Not only do we excel in academics, but we also excel in athletics. We played through snow and wind and heat before winning both the fall and spring intramural flag football championships.

We also participated in many fraternities' and sororities' philanthropy events, including Tri-Delta's Frats-at-Bat, Sigma Alpha Epsilon's Sorority Bowl, and Delta Gamma's Anchor Splash.

BP/Michigan State

By Jessica Godell

Last fall, we hosted our second grill-off to raise money for CASA. Members of 22 campus sororities and fraternities set up booths in the sports field located behind the Theta facility and sold samples of different creative cuisines. Although the weather was a bit overcast and cool, it didn't stop family members and local residents from buying tickets and attending the event. Also in attendance were reporters from FOX news, the Lansing newspaper, and the MSU stu-

For the second year in a row, the Beta Pi Chapter at Michigan State hosted a campus-wide grill-off to benefit CASA.



dent newspaper!

The grill-off itself raised \$3,730 for CASA, and—through a raffle the previous spring—we raised an additional \$1,400, for a total of \$5,130! We plan on making this tasty fund-raiser an annual MSU tradition.



Felicity Hillmer, Beta Tau Chapter's advisory board chairman, was honored with Denison's outstanding chapter advisor award.

BT/Denison

By Courtney Smith

The Beta Tau Chapter has been very active on campus. During the spring, we held an all-campus philanthropy softball tournament, KATs with BATs. With the help of team registration fees and community donations, we raised more than \$1,500 for CASA.

We can boast of a very successful informal and formal recruitment as both quota and total were reached. During the school year, 35 new members were initiated.

At Greek awards, our advisory board chairman was recognized as outstanding chapter advisor among all the chapter advisors on campus. We are very thankful for all the work and time that she has dedicated to our chapter. Next year, we are looking forward to our 75th anniversary at Denison, and we are holding a weekend celebration during homecoming to commemorate our years on campus. Any questions concerning this event should be directed to Alumnae Relations Chair Laura Faulkner, at faulkn_l@denison.edu.

BY/British Columbia

By Daphne Huang

It has been an exciting first year for Beta

Upsilon! We had the honor of being initiated by several Grand Council members, and following our initiation was a wonderful installation banquet, where we had the chance to meet Theta alumnae from all over.

January was especially busy for us, with the slating of our first officers, our first recruitment session and an amazing Founders Day celebration. We were able to invite four wonderful women to join our sisterhood, and we had a great turnout, with over half our chapter and several alumnae from all over British Columbia in attendance.

Along with another fraternity, we sold poppies on Remembrance Day to raise money for the Royal Canadian Legion. We also participated in several sororities' philanthropies, winning first place in a basketball tournament and second place in a softball tournament. We are currently planning our own philanthropy, to take place in fall 2004.



Members of the Beta Phi Chapter enjoyed Penn State football games.

BΦ/Penn State

By Kate McCarthy

We started off the fall semester with recruitment and then welcomed our 20 new members. Everyone enjoyed our Theta hayride in September, and in November, we participated in Greek sing by performing *42nd Street* with Pi Kappa Phi.

When we returned to school after winter

Members of the Gamma Iota Chapter worked hard on their entry in the University of Kentucky's Greek sing and were thrilled to win first place.



break, we had all managed to keep our grades up and earn a 3.32 average GPA! We celebrated Founders Day and enjoyed visiting with the local Thetas on that beautiful Sunday afternoon.

We spent two weekends raising money for the Panhellenic/IFC dance marathon, THON. THON is the largest student-run philanthropy in the country and has raised \$3.6 million dollars for kids with cancer. This year we are very proud of our four seniors who danced in THON!

With the rest of the spring ahead of us, we had St. Patrick's Day to celebrate together as well as planning for Parents Weekend and Theta Bowl. Theta Bowl is our philanthropy to raise money for CASA. We wrapped up the year with the Theta formal and the senior retreat.

ΓΔ/Georgia

By Clare Flournoy

What a great year to be a Theta at Georgia! The 2003-2004 school year provided the Gamma Delta Chapter with amazing opportunities for growth, service, and fun. The fall was filled with football games, socials, and the excitement of 60 wonderful new members.

And this year has been a year of service, with two successful barbecues for CASA and participation in numerous community events, such as Relay for Life and HERO. The spring philanthropy on our front lawn had one of the best turnouts ever!

We definitely proved that Georgia Thetas know how to have a good time. We had quite a few events at Athens' unique Georgia Theatre, and the formal was held at the beautiful Classic Center. Mother/daughter weekend was especially memorable this year with a fashion show featuring clothes from several local favorites.

ΓΙ/Kentucky

The Thetas of the Gamma Iota chapter took first place in the sorority division of the annual Greek sing competition. We remained dedicated and worked extremely hard for weeks to perfect our performance. The majority of the chapter contributed in all aspects of the competition, including painting banners, making costumes, and working together to make sure everyone performed at her best. Proceeds



During autumn recruitment, the Gamma Rho Chapter gained 24 new members.

from the event were contributed to the Make-a-Wish Foundation. We were thrilled to receive first place and are looking forward to next year's competition.

ΓΡ/UC Santa Barbara

By Kindra Johnson

The Gamma Rho Chapter had an incredibly productive year. In the fall, we recruited 24 new members, filling our facility to its maximum capacity. We had a successful Founders Day ceremony with great attendance from both alumnae and chapter members who got to know each other a little better through some Theta trivia.

Our chapter wasted no time in starting service projects, one of them being weekly trips to the local retirement home to play games with its residents. We had a new program this year, hosting a Lucky Brand Jeans sale from which 10 percent of all sales went to CASA. This was a huge success, with an overwhelming turnout from Greeks and non-Greeks alike. Our chapter also won Sigma Chi Derby Days, Lambda Chi's inter-sorority volleyball tournament, and Delta Gamma's Anchor Slam. Not only did the Gamma Rhos prove athletic, but we also received the highest GPA of all national sororities on campus fall quarter.

ΓΤ/Tulsa

Maria Gaw & Lucinda Rojas

The Gamma Tau Chapter has continued to strive toward higher goals during the past year. At the District Leadership Conference, the Fraternity presented our executive council with an award for a semester of outstanding grades. We have since completed our third semester in a row with the highest GPA among all sororities on our campus.

We have also continued our philanthropic work for CASA by holding a very successful campus-wide soccer tournament and cookout, as well as volunteering for Christmas for Kids and Justice is Served, a local CASA fund-raising dinner. Our volunteer work has also extended to various



Members of the Gamma Tau Chapter staged a campus-wide soccer tournament to benefit CASA.

organizations as we have helped to raise over \$12,000 for several charitable organizations in the past year.

Our efforts toward community service were rewarded with the prestigious University of Tulsa Medicine Wheel Award, which is given at graduation to the group and individual with the most community service. Gamma Tau was proud to be presented with both awards. Our wonderful advisory board chairman was chosen as the University's advisor of the year, and the Panhellenic awards banquet was also a time to celebrate and show our success as a chapter; we won six awards.

Gamma Tau's members continue to strive individually and collectively to reach higher ground by making improvements to the University of Tulsa and beyond!

CASA and the Kappa Alpha Theta Foundation. Our chapter is planning and looking forward to great events this semester, including a wonderful fall recruitment and beneficial philanthropy!

ΓΨ/TCU

By Bethany Doherty

The Thetas of Texas Christian University have every reason to be extremely proud of our affiliation after the Spring of Omega awards banquet last year. We found ourselves immersed in a sea of trophies by the end of the night, providing tangible evidence of our hard-earned successes this past year. Individual members and the chapter as a whole received eight awards, and the culmination of the evening was when Kappa Alpha Theta was announced as the recipient of the TCU Chancellor's Award for Chapter of the Year!

Our seventh annual Fall Breakaway 5K Run/Walk was also a huge success. This year's run drew more than 1,400 participants of all ages from both the TCU campus and the surrounding Fort Worth community. We were thrilled to have raised an astounding \$22,000 to benefit the Child Advocates of Tarrant County.

ΔΔ/Whitman

By Danielle Shea

This past year the Delta Delta Chapter did some amazing things! We gained 18 new members, and these women excel in not only academics but also in dance, swimming, snowboarding, golf, music, volleyball and many other activities around campus.

Helping CASA was one of the chapter's main goals this year and we put on two fabulous events to help raise money. The first was Tunes for Tots, a benefit concert where two of Whitman College's a capella

The Delta Delta Chapter sponsored an a capella concert to raise money for CASA.



PELLA groups performed. The second event was Bring Your Own Frisbee, a Frisbee golf tournament. Both of these events went extremely well, raising more than \$1,000.

Our chapter had an overall GPA of 3.441 in the fall; up from a 3.376 in the spring of last year.

ΔE/Arizona State

By Ashley Macnamee

The Delta Epsilon Chapter has completed a very successful year. Last November, we held our popular Kats with Bats fundraiser and also threw a picnic for the CASA children to celebrate its success. In the spring, we held a Theta T-shirt auction and all proceeds further benefited the CASA children in the Phoenix Valley. Through collaboration with our alumnae chapter, we have developed a new "alum chum" program that is designed to match active members with alumnae members who have similar career interests.

In February, our chapter was honored at the Greek Life Awards when two of our members were named junior of the year and Greek woman of the year, respectively. In the spring, our freshmen class swept the Salt River Panhellenic Association Scholarship competition, winning half of the scholarships allocated to the entire Greek community at ASU. Other chapter members have also received multiple scholarships from ASU. Furthermore, we had two players on the victorious ASU Basketball team, and Kylan Loney was named the Pac-10 player of the week.

ΔH/Kansas State

By Kristin McCauley

As runners crowded into the Union Courtyard plaza at Kansas State University on September 28, 2003, they were competing to raise awareness for CASA. We hosted the seventh annual WildKAT Chase, a 5K run/walk with proceeds benefiting the local CASA project. Not only did around 700 participants pre-register for the event, but more than \$6,000 was raised, more than

double the previous year's total. Besides drawing a large crowd from the surrounding Manhattan community, many Greek and other organizations on campus participated, as well as Theta parents and local running clubs. Each runner received a T-shirt with the registration fee. With the past successes, WildKAT Chase is an event that will be around for



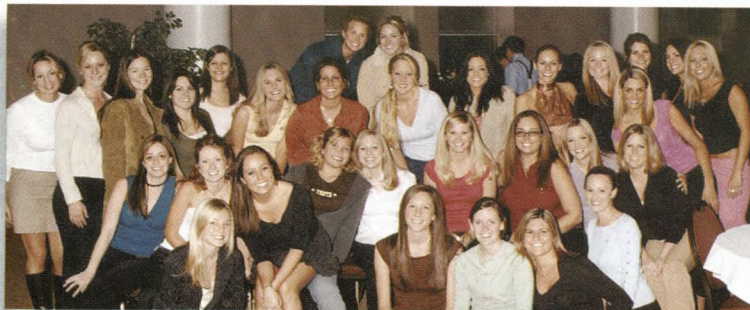
Gamma Chi Chapter's fourth annual golf tournament raised \$3,500 for CASA.

ΓΧ/Fresno State

By Jenna Ghidelli

Spring semester flew by for the Gamma Chi Chapter. We had a great informal recruitment with an addition of seven new members to our chapter. This past semester we also improved our overall GPA and were awarded "Most Involved in Philanthropy Events" by the Fresno State Order of Omega.

We had a wonderful Founders Day celebration, and, in April, we held our 4th annual Theta golf tournament. Twenty-two teams of family, friends, and Greek members came out for a day of golf, fun, and fundraising. We raised more than \$3,500 for



After the Greek Life awards ceremony at Arizona State, at which they received two prestigious awards, members of the Delta Epsilon Chapter posed proudly for a photo.

many years to come, and in the future we hope to continue to increase our donation to CASA as well as awareness in the community about this amazing program!

ΔO/Alabama

Thetas at the University of Alabama raised an impressive amount of money for CASA during the spring semester. Around Valentine's Day, we held Kisses for CASA; at a booth in the student center we took turns selling Hershey's kisses to passing students. Our annual Tacos for CASA fundraiser was the most successful yet. Students, faculty, and members of the Tuscaloosa community were invited to join us at our facility for tacos. The efforts made by all the members of the Delta Omicron Chapter, as well as the positive publicity, resulted in revenue of more than \$2,000.

We also helped out the Kappa Deltas in the Run for the Rise, the Delta Zetas with Hoops for Hearing, and Alpha Omicron Pi's Strike Out Arthritis. It was a great year for philanthropy at the University of Alabama.

ΔY/Eastern Kentucky

By Erin Dreisbach

At the Delta Upsilon Chapter, we had one of our best semesters ever. For the first time in many years, we reached quota and now have 70 wonderful girls in our chapter. We also held our annual philanthropy event, Sink or Swim, in which we raised over \$500 for our local CASA chapter.

Our members have also been working hard to keep up their grades. Our active members were first in grades on campus with a 3.08 grade-point average!

Besides philanthropy and grades, we have been excelling in many other areas as well, including intramural sports. We hope that next semester is even more successful with many more accomplishments!

ΔΩ/Texas A&M

By Julie Taylor

Every Thursday night in late winter and early spring, the members of the Delta Omega Chapter gathered around the television to catch the latest episode of *The Apprentice*. We weren't tuning in to see the latest mission, the exciting rewards, or Donald Trump. We were tuning in to see Amy Henry, a Delta Omega alumna. The native Texan brought a positive attitude, sportsmanship, and true character to the game. She served as a great representation of the character a true Theta possesses, and all her fellow Aggies in College Station were proud of her accomplishments and the positive image she presented of Kappa Alpha Theta and Texas A&M University.



In Baylor's all-university sing, members of the Epsilon Epsilon Chapter performed 'Extra, Extra!'

EE/Baylor

By Ashley Saltzer

The sisters of the Epsilon Epsilon Chapter at Baylor University were quite busy throughout this past year! We kicked off our eventful year with weeks of hard work and practice for Baylor's Pigskin Revue and countless hours of dedicated work with the men of Beta Theta Pi on our *Sesame Street* float for the homecoming parade.

Theta Taters, which benefited CASA, was a great way for potential new members to meet tons of wonderful Theta ladies. We were blessed with an incredible new member class in the wake of a new semester.

As our second semester came to an end, our chapter began preparing for our annual Theta Olympics. Tons of energized fraternities competed in all of the fun and games and helped us raise money for CASA.

We enjoyed volunteering at Kids & Co., a local after-school program for kids! Every week, Thetas just hung out with the kids, helped them with their homework, and played games and sports with them.

EI/Westminster

The Epsilon Iota Chapter had a busy year. We held a senior citizens ball, worked on our section of the highway near the college, and participated in the charity events of other fraternities and sororities. And we held Cupids for CASA, a week of events that raised money for CASA.

We held our formal dance in a wonderful restaurant called Tanzania's. Earlier in the year we held a social event in which the girls got to invite two people that they had a crush on. We all had a good time at the movies that night.

Our chapter is constantly working to improve our academic performance. For the first semester of this year, we had the best grades on campus.

EA/Dickinson

By Susan Hochreiter

Not only did our chapter celebrate her twenty-first birthday during 2003-04, but the women of Epsilon Lambda also managed to maintain our reputation for commitment to community service, high scholastic achievement, and active campus involvement.

The fall semester marked a successful recruitment season, with a new member class of 30 young women. We also continued an annual tradition called "HUB nut riding," in which we spend an entire day, rain or shine, outside the student union, the HUB. We sit on large, round cement structures ("HUB nuts"), and take donations for the Leukemia Society of America; the philanthropy honors a late sister who suffered from the disease.

The busy lifestyles and numerous achievements of the Thetas of Dickinson College were rewarded at the Annual Greek Awards, at which the chapter received an award for highest degree of campus and community involvement out of the women's Greek organizations at the college.



Members of the Epsilon Lambda Chapter stage an annual 'haircut-a-thon' to raise money for CASA.

EO/Randolph-Macon

By Elizabeth Ogren

This school year has been a busy one for the Epsilon Omicron Chapter. We started off the year participating in Greek move-in, which helped freshman settle in on their first day at college. During Greek Fall Fest, Theta participated in the chili cook-off and won the award for best Greek chili. In October, we put on our annual philanthropy event, Rock the CASA, and in December, we won second place in Randolph-Macon's Christmas decoration contest. In March, Theta had three teams participate in Dance Marathon, a twelve hour philanthropy event that raised \$32,000 for Children's Miracle network. On April 18, 2004, twenty years after Theta first came to Randolph-Macon, alumnae and current members gathered for lunch to celebrate Founders Day.

EΠ/Bucknell

By Mary Quintilian

The Epsilon Pi Chapter, located in Lewisburg, Penn., has been really busy this year! In the fall, we held our annual pancake breakfast for CASA during Parent's Weekend, and we raised \$2,200. Last year, we also had more than 1,500 hours of community service as a chapter. Among our many events were bingo with the residents of Riverwoods Retirement Home, a fall clean-up at the Elysburg Monastery, and a Girl Scouts after-school program.

Theta also is very passionate about scholarship. We had the second highest GPA of all Greek organizations at Bucknell, with a cumulative chapter GPA of 3.39. Currently, we are looking forward to and planning the celebration of our 20th anniversary on Bucknell's campus in the fall of 2004.

EP/Lehigh

Of the Greek organizations at Lehigh, we are one of the most actively involved, both on- and off-campus. To raise money for CASA, we organized and held Rock la Casa, an outdoor concert featuring local musicians. It was a really fun way to raise money for CASA. Since it took place in late August, before classes started, it was also a great way to welcome freshmen to our campus. Most recently, we helped out with Spring Fling, a campus-wide community service event in which local elementary school students were able to enjoy an Easter egg hunt and lots of other spring-themed arts and crafts. We have been recognized by Lehigh for our outstanding efforts. In addition, of all the chapters at Lehigh, we received the highest number of RER points—a measure of occupancy, community service, participation in campus events, scholarship, and faculty involvement.



Members of the Epsilon Sigma Chapter served as volunteers at a black-tie fund-raiser for CASA.

EΣ/UC Irvine

By Natalie Boleda

This year has been filled with a lot of great achievements for us, including winning the sports trophy at this year's Greek awards, as well as the service award for excellence in philanthropic endeavors. Every fall we have our annual Go Fly a Kite service day. We invite all the fraternities, sororities, and campus clubs and organizations to participate in a volleyball and basketball tournament, tug of war, and a kite-making competition during the day and a talent show competition at night.

In addition, we became directly involved with CASA by volunteering at their black-tie gala, Celebration of the Children. We volunteered as opportunity prize ticket sellers, auction runners, and registration table runners. We sold almost \$15,000 worth of

opportunity prize tickets, and the entire evening raised a total of \$450,000!

EΠ/Chicago

By Molly Cross

The Epsilon Phi Chapter of Kappa Alpha Theta has had a fabulous year thus far! After filling quota during recruitment 2003 and initiating 16 girls into our sisterhood, we set to work on our annual philanthropic fund-raiser, Mr. University. Overall, Epsilon Phi raised \$4,500 for CASA; ninety percent of the profits were donated to the Cook County CASA of Chicago, which is near and dear to our hearts, while the remaining ten percent was donated to the national CASA foundation. By far, Mr. University is the largest Greek fund-raiser on campus and is quickly becoming a tradition of the college.

EΩ/Washington & Jefferson

By Jennifer Edmiston

The women of Epsilon Omega Chapter celebrated their Theta families as well as their biological families last spring. Considered a tradition, this family picnic gathers Thetas and their families—including mothers, fathers, siblings, and grandparents—"under one roof."

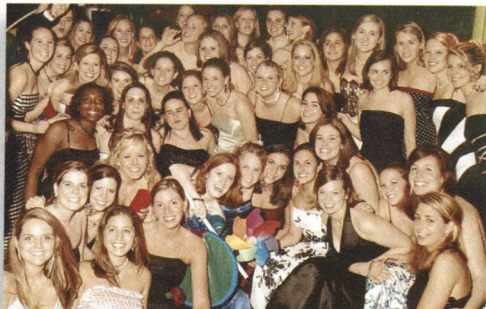
To make the day even more special, we collected and displayed baby pictures of each member. Everybody had a good laugh trying to identify the photos, noticing resemblances in some cases and having no clue in others. We also hung a banner full of fun Theta facts. This provided all the Theta families a better understanding of all the great things Theta provides: community, sisterhood, and friendship.

As always, the Epsilon Omega family picnic was a hit, with more than 200 Thetas and their families. As the shirts we wore for the occasion said, "The only thing better than being a Theta is being in the family."

ZI/Washington & Lee

By Leigh Anna Thomure

This past school year has been an exciting one for the Zeta Iota Chapter at Washington and Lee! We helped with two blood drives, sponsored a rose sale in February to benefit the American Heart Association, hosted both a 5K run and a pancake breakfast for CASA, and participated in a lip synch to benefit the local organization Students Against Rockbridge Area Hunger. We are also proud to say that we have some of the smartest girls on campus, with a cumulative chapter GPA of 3.41 for the winter term 65 of our members made



At midnight, members of the Zeta Iota Chapter gathered for a photo at the 97th annual Washington & Lee fancy dress ball.

the Dean's List!

And as always, the Zeta Iotas like to have fun! We had a blast at our Twin Stars formal and our Find a Mister for Your Sister new member formal in the winter. We also had a great time at the Tacky Prom semi-formal with Kappa Delta and at our Kite and Key semi-formal with Kappa Kappa Gamma.

ZN/UC Davis

By Tina Sunseri

Now in its twelfth year of existence, the Zeta Nu Chapter began the 2003-2004 academic year with a fall new member class of 29, bringing the house total to 84 members.

This past spring provided many opportunities for the Zeta Nu Chapter to participate in community service projects. The Relay for Life and the March of Dimes both took place on the same weekend in April, and the Zeta Nu Chapter had teams in both charity events.

April was also when the first Lucky Brand Jeans Sale was hosted at the Zeta Nu house. The two-day sale raised approximately \$400 for the Yolo County chapter of CASA.

In May, we hosted the third annual Rock the CASA. The benefit rock concert raised approximately \$2,700 for the Yolo County CASA, an increased profit from the year before, proving the philanthropy event to be a success.

ZP/UC San Diego

By Ilana Spokoyny

The Zeta Rho Chapter has accomplished an enormous amount this past academic year. KATwalk, the annual philanthropic fashion show, was a huge success with all the proceeds benefiting national CASA and Voices for Children, the local CASA. The Zeta Rho ten-year alumnae reunion was held in downtown San Diego and was a memorable event which brought together old friends along with new members.

San Diego has dealt with a tough year, due to the wildfires that spread throughout the county, destroying many homes and leaving thousands of families homeless. As part of our community service program, we volunteered at the shelter that was set up for the victims, serving lunch and organizing the donated clothing. The San Diego Rescue Mission has become another ongoing service project. A Mother's Day fund-raiser with Delta Delta Delta involved planting pansies at the SDRM. We have been to the Rescue Mission many times since the pansy planting, organizing donations and handing out food and toiletries to homeless women and children.

ZΣ/Ohio Northern

By Becka Griewe

The Zeta Sigma Chapter has accomplished many wonderful things during the 2003-2004 school year. We held our first Valentine's Day rose sale to benefit CASA in February, and it turned out to be a great success. Another accomplishment this year was recapturing our title as Greek Week Champions.

But our biggest accomplishment was celebrating our chapter's ten-year anniversary. At the beautiful reunion party, Zeta Sigma's first president, Jane Wainscot, spoke about what it took to start a sorority on campus.

We are also very proud to announce that we received the chapter of the year award at Ohio Northern!

ZΩ/Loyola Marymount

By Kristi Machart

We have had another wonderful year filled with plenty of great accomplishments, and we have made some amazing and lasting memories. We once again achieved the highest scholarship in the Greek community at Loyola Marymount. We were also the football and volleyball champions in Greek Week. KATastrophe, our charity kickball tournament with a messy twist, was very successful and had an excellent turnout.

Spring recruitment brought us 45 wonderful new members. We had a fabulous overnight retreat and our first big sis/little sis challenge, which provided an opportunity for us to bond with our Theta families. On top of all this, we had a new philanthropy this spring called KAT Walk, in which teams

competed against each other with choreographed acts for the runway. It was a tremendous success and was honored with an award at the Greek Awards.

HH/Albertson

By Allison Brooks

The Eta Eta Chapter has had its most promising yet in its ripe old fourth year. We are the only women's Greek group on campus that has ever attained quota on our campus and are working as leaders on to promote the positive aspects of Greek life and increase chapter totals for the other organizations on campus as well.

Because we feel so fortunate right now, our members looked back at the reason our chapter has become what it is. That reason is most certainly the wonderful women of Eta Eta's charter new member class who worked so hard and stuck together through some really trying times to achieve what we had today. We will work hard to carry on the excellence they have established for Kappa Alpha Theta.



Eleven Greek groups on Central Florida's campus participated in Spring Fling, helping the Eta Theta Chapter raise \$1,500 for CASA.

HΘ/Central Florida

By Erin Krause

Participating in philanthropy events has kept the Eta Theta Chapter busy. Benefiting the Children's Miracle Network, a team of sisters boogied 24 hours for a dance marathon. Our chapter received the Golden Dancer Award for the most money raised by one person and the Hero Cup for the highest average money raised per person. Our chapter placed first in Hostages for the Homeless, a canned food drive with activities. Spring Fling, hosted by the Eta Theta chapter to benefit CASA, was a success with the participation of eleven Greek chapters and \$1,500 raised.

During the Spring 2004 semester, our chapter achieved above the all-sorority GPA and was voted outstanding Greek scholastic

Honorary & Memorial Gifts, continued from page 37

Wandry, by Fort Worth Alumnae Chapter
75-Year Theta Shirley Scales Weber by Rose Fraser Jacobson
50-Year Thetas
Rebecca Thomas Balcom, Artis Olson Ball, Diane McFarland Cornwall, Sally Greene Emery, Diane Thomas Hall, Dorothy Evans Kemble, Sally Werst McKeen, Janet Taylor Miller, Carole Aderlitch Reed, Marlon Evans Seghetti
50-Year Theta Katherine Nolte Morris by Barbara Young Sipp, by Ruth Crabill Young
1990 Gamma Psi Chapter Pledge Class by Ashley Watkins McDowell
Alpha Upsilon Chapter by Susan Oxendale
Alice Charleston Anderson's 50th Wedding Anniversary by Arlene Dumars Callaghan
Sharin Apostolou's Graduation by Mr. and Mrs. D. Apostolou
Mary Jane Parker Beach's Four Years as Fraternity President by Fran Cooper Sale
Beta Xi Chapter's 1948-1952 Reunion by Catherine "Kitty" Colligan Chambers
Beta Zeta Class of 1962 by Sue Wright
Birth of Daniel Simon Bauer by Alison Bauer
Birth of Mary Grace Rinehart by Elizabeth Hoza Harootyan
Birth of Court Alexander Whigham by Ashley Parkman Smith
Birth of Isabelle Grace Whitehead by Debra Olson Sowell
Amanda Borgida by Kathleen Borgida
Camryn Calabrese's 1st birthday by Carolyn Jones Minton
Elizabeth Erin Capener by Mr. and Mrs. John T. Capener
Anna Carlton by Sally Field
Megan Ceryanec by LaNae Ceryanec
Virginia "Ginny" Wiggins Childs by Fran Cooper Sale
Kristen Clark by Sheridan Williams
Katrina Cosner by Ken and Lyn Cosner
MacKenzie Dahl's Graduation by Linda Dahl
Dakota Elliott by Leta Staley
Engagement of Dr. Leanne Goldstein to Dr. Denny Jenkins by Joan Goldstein
Epsilon Tau's 2004 Graduation by June Stack
Leslie Denney Etheredge by Fran Cooper Sale
Amy Todd Fesperman by Fran Cooper Sale
Gamma Delta Fifties Thetas by Evelyn "Bootee" Gowen Wood
Gamma Omega Chapter's 1962 Pledge Class by Fran Cooper Sale
Helen Rittenour Geesey by Fran Cooper Sale
Lauren Gorsky's Graduation by Sally and Mark Gorsky
Susan McIntosh Housel by Fran Cooper Sale
Harriette Mitchell Huggins by Fran Cooper Sale
Leisa Ward Jones by Fran Cooper Sale
Julie Alissa Kass by Alan and Maryanne Kass
Emily Koester by Cynthia Koester
Stephanie Nicole Lamia

by Michael and Patty Lamia
Leann Michelle Lovas by Fran Cooper Sale
Marriage of Lauren Keena and Jim Cooksley by Amanda M. Mayer
Marriage of Lee Ellen Skelton and Myles Harner by Jennifer L. Lucas
Marriage of Susannah Wicks and John Mechem by Becky Kubic by Jennifer L. Lucas
Diane Moon Miller by Fran Cooper Sale
My 68th Birthday by Dorothy L. Devenish
Jennifer Wright Nabors by Fran Cooper Sale
Nu Chapter by Deborah Baker
Janet Paine Peters's Birthday by Elizabeth Green Gavigan
Philip, Ben and Robert by Claire Anton
Mercy Heffernan Pilkington by Fran Cooper Sale
Genar Carter Reed by Fran Cooper Sale
Wendy White Ring's 25th Anniversary in Theta by Jo Ann Johnson White
Hallie McNeill Rowland by Casey Conklin Rowland
Mary Ryan by Julie Jones
Rosemary Ginn Sawyer by Fran Cooper Sale
Lea Kennedy Seelbach by Fran Cooper Sale
Kimberly Shelton by Beverly Shelton
Elizabeth Simpson's Graduation by Patty Simpson
Ashley Parkman Smith by Fran Cooper Sale
Dorothy Ann Smith by Ann Snodgrass Jenkins
Kate Talbert's Graduation by Rosemary and Larry Talbert
The GABC - EN Virginia Tech by Katherine S. Berardelli
Vero Beach Alumnae Chapter by Kathy Bennett Tonkel
Marcia Fink Webb by Fran Cooper Sale
Marion Morgan Winters by Nancy Winters Mullins
Marcia Johnson Zier's Birthday by Catherine O'Banion Johnson

IN MEMORY OF:

Lynne Abowitz by Deborah Abowitz
Ruth Alred by Bartlesville Alumnae Chapter
Jeanne Gill Anness by Patricia "Patty" Gill Ris, by Sarah "Sally" Anness Slattery
Mary Fennemore Arena by Jennifer E. Sherman
Betsy Foote Babb by Emily White
Thomas "Bud" Barnaby by Phyllis Barnaby
Virgil Crook Barritt by Rebecca Barritt Cameron
Martha Emison Baur by Albert E. Baur
Julie Betschart by Susan Gillette Meer
Marlene Sieger Bieluwka by Sandra Blymyer Cross
Isabel Blythe by Frances Cook Eliades
Anna Ward Boardman

by Mary Boardman Ciaschini
Margaret Bourdeau by Martha Lamarre McCoy
Barbara Winston Bovee by Betty Roberts Dobler
Jane Browne Bove by Rita Marsh-Birch
Helen Williams Bowen by Pamela Bowen Conroy
Ruby Brite Bowker by Nancy DeYager Hill
Marymar Newton Braybrooks by Suzanne Shaw Winship
Jane Bryan by Martha Bryan Foreman
Virginia Daugherty Buck by Ginny Walsh Eulich, by Carolyn Weigand Rader
Geraldine Williams Cassidy by Ella Faye Price Hall
Mildred Kirk Caufield by Amarillo Alumnae Chapter
Charlene Champey by Lois Basse Gibbs
Martha Kildow Clark by Ty and Linda Cobb, by Darien and Bob Pickens, by Margaret and Dick Wood
Jan Katterheirich Cockman by Eleanor Jane Howard Coffman
Margaret Nygaard Collins by Elizabeth Henderson Steinmeyer
Berta Ruth Cooper by Fran Cooper Sale
Judith N. Copp by Barbara Brown Barker
Linda L. Ericson Craig by Suzanne Brown Craig, by Barbara Torr Ford
Clare Moore Stanton Crockett by The Athenaeum Book Club, by Anne McWherter Payne
Alana J. Long Croft by Kim, Susie, Kimball and Cassie Magee
Dorothyann Davidson by Santa Barbara Alumnae Chapter
Carol Wood Davis by Tucson Alumnae Chapter, by Cathy Lammers Fickas, by Jean Knight Markley
Marjorie Duryee by Mary Webb Duryee
Frances "Fannie" Healy Eagle by Dorothy Anne Murphy Van Nest
Eleanor Fox by Cleveland (East) Alumnae Chapter
Diana Taylor France by Ann France Van Atta
Ann Marie French by Christa Ralston Cifelli
Sharon Gasset by Geraldine Thompson
Mary "Stevie" Stevens Gentry by Jean Stevens Pyler
Catharine B. Hagar by Jane Hooper Provost
Mimi Shepherd Haisman by Suzanne Shaw Winship
Phyllis Love Hardy by Joan Hardy Brumfield
Gail Wilson Harmon by Gail Beckman Rudolph
Jean Merriken Harrison by Pat Harrison Fulton
Amy Hasbrook by Lauren Padalino
Mary Hawkinson by Monterey County Alumnae Chapter
Julia Hansen Henry by Joanne Henry Nielson
Joan Burnell Herpolsheimer by Sarah Anderson Boyd, by Linda Bird Brown, by Helen Waller Roman, by Kathleen "Kathy" Bennett Tonkel
Betty Jo Hickey by Ann Marie Wallace
Emma Sue Cowden Hightower by Carol Cullum Allred
Alice Ingram Holcomb by Linda Crank Moseley

Judy Pickard Howells by Linda Murdock Pawlaw
Elaire Lossman Ivie by Iowa City Alumnae Chapter, by Susan Ivie Boling
Betty Knight Kritser Johnson by Amarillo Alumnae Chapter
Esther Josi by Monterey County Alumnae Chapter
Edward Kane by Chicago NW Suburban Alumnae Chapter
Elizabeth "Liz" Lueder Karnes by Susan Brown Ferrarini, by Mary Grube Wahl
Gladys Kempf by Katherine Kempf Hager
Keltie McCoy Kirkpatrick by Lafayette Alumnae Chapter
Margaret Knight by Clearwater Alumnae Chapter
Alice Knorr by Katie Carey
Corinne Grinslade Koerner by Lafayette Alumnae Chapter
Jane Shingle Koford by Patricia Polk Dodd
Shirley Smith Korman by Carol Hefren Tillotson
Mary Forssell Kramer by Josephine "Jodie" Moody Miller
Patricia Sanford Kunkel by Driscilla Somers Doehman, by Dr. William A. Kunkel III
Lois Lambert by Fran Cooper Sale
Arlene J. LeFlore by Mary LeFlore Clements
Nancy Lightburn by Clearwater Alumnae Chapter
Patty Livermore by Susan Patterson
Jacqueline Bryant Lomax by Jane Richard Christie
Galey Shappert Lucas by Rockford Alumnae Chapter, by Carolyn Mattison Allison, by Sue Anderson Busby, by Doris Drew Robertson, by Susan Olmstead Wold
Sally Schumacher Martin by Barbara Schumacher Richardson
Mary Lee Hopkins Masterson by Mary Baker Dutcher
Ines Abbott McCrary by Janet Remy Griffith
Helen Melvin McCuen by Robert P. McCuen
Marilyn Bachelder McDaniel by Sally Kimmel Young
Linda Dorrah McDonald by Fran Cooper Sale
Suzanne McKean by Nancy W. Kaiser
Philip J. McKenna by Elizabeth Meister McKenna
Jean McRae by Hartford Alumnae Chapter
Dorothy Shideler Mead by Lynda Mead Shourds
Margaret Marquart Miller by Lucille Cox Kirk, by Mary Lou DeVennish Swartz, by Stephen and Susan Wall
Virginia F. Miller by Judith Miller
Anne Irvine Momsen by Alice Schmidt Callistro
Julie Moser by Christina Hamilton
Annabelle Parr Myers by Janet Myers Harless
Elizabeth Tatman Neal by Elizabeth Neal Callaway
Peggy Miles O'Connor by Anne Miles Fletcher
Victoria Morgan O'Connor by Naples-Marco Island-Bonita Springs Alumnae Chapter, by Dale Barthold Kaczynski
Barbara Creighton Owens

by Doris Dreuise Hastings
Charles Pendock by Doris Gestland Van Driest
Eva Pereira by Lisa Burger Foster
Eleanor Spofford Plotts by Julie Milam Champion
Bette Wilsay Potter by Hartford Alumnae Chapter
Betty Reneker by Amy Reneker Buckley
Susan Parshall Russell by Yvonne Bearss Coyle
Marilyn Patterson Schlangen by Sonoma County Alumnae Chapter
Margaret Hager Schumacher by Barbara Schumacher Richardson
Lois von Behren Sheperd by Joanne Arvidson Shepherd
Virginia Bryant Shilstone by Margaret Shilstone
Mary Lynn Dubose Smead by Carol C. Allred
Jean Henderson Smith by Ann Chambers Paris-Lillyston
Molly Hoover Smith by Ruth H. Sprout
Ona Kirkland Sommers by Sally Pinkerton Dickinson
Marjorie Pein Southwick by Eleanor Macy
Muriel Anderson Steed by Birmingham, MI, Alumnae Chapter
Curtis Sterling by Deborah "Debbie" Bornmann Allen, by Lynn Foxhall Badgwell, by Katie Oleskevich Bensen, by Amy Dye, by Kathy Torno Roat
Ellen Lowery Stoesser by Edith McMahon Lowery
Eleanor "Cookie" Cook Stradling by Jean Smelser Butz, by Bob and Kayo Walker
Nancy Chapman Swadesh by Marin County Alumnae Chapter
Esther Stafford Taylor by Ann France Van Atta
Ruth Locke Thompson by Nancy Thompson Seale Shirley
Edith "Dede" Shigley Tignor by Lois Brown Taylor
Antoinette "Toni" Forbes Tomko by Cleveland (East) Alumnae Chapter, by Mary Lou DeVennish Swartz
Katharine "Kay" Snare Van Ness by Linda Phillips Knoblock
Thomas A. Vitek by Shirley Allen Douglas
Kathryn Martin von Foregger by Julie Milam Champion
Erika Leigh Wetzel by Deborah "Debbie" Bornmann Allen, by Anne Sadler Budill, by Suzanne "Suzie" Sterling King
Donna Cameron White by Sandra Blymyer Cross
Mary MacIvor Wilcoxon by Barbara Giesen
Gail Wasson Wilson by Gail Beckman Rudolph
Jane Hamilton Wilson by Sherla Jennings Alberola
Rena Wilson by Cecile Costley Stone
Susan Sheperd Woessner by Joanne Arvidson Sheperd
Viola Wagner Yule by Tola Martin Eley
Catherine Hart Zay by Barbara Zay Moss

**Burr
Patterson
&Auld**
Unique. Classic. Timeless.

16" SS Lucky
Horseshoe
Necklace
#604027
\$38.00

SS 16" Unique
Necklace
#604026
\$27.00

SS 16" Dotty
Necklace
#604025
\$42.00

SS 18" Sandal
Charm
w/ CZ Necklace
#602090
\$32.50

Sandal Charm
only, \$22.00

SS 7.5" Tag Bracelet
w/ Heart
#603051
\$45.00

SS 7.5" Eternity Bracelet
w/ SS Toggle and CZ's
#603050
\$75.00

SS 7.5" Venetian Box
Bracelet w/ Tag
#603054
\$30.00

SS 7.5" Eternity Bracelet
w/ 10K Toggle and CZ's
#603053
\$100.00

SS 7.5" Blush Bracelet w/ Tag
#603056
\$92.00

SS Serenity
Ring
#601070
\$30.00

SS Sincere Ring
#601071
\$30.00

SS Eternity Ring w/ CZ's
#601074
\$141.00

To order call
1-888-526-1870 x-116

Monday-Friday, 8:30-4:30 EST

-or-

www.kappaalphatheta.org

Visit our website to see more KAΘ jewelry, including badges!

Holiday orders must be placed by Nov. 24 to ensure delivery!